

# SUPERHEROES UNITE!



# Table of Contents

LETTER FROM THE CEO/CHAIR	2
MISSION, SERVICES, AND WHO WE SERVE	3
SUPERHEROES UNITE IN DIVERSITY INITIATIVE	4
SUPERHEROES UNITE IN SAFETY	5
SUPERHEROES UNITE IN WELL-BEING	7
SUPERHEROES UNITE IN PERMANENCY	9
LEADERSHIP AND SERVICE AREA MAP	11
FINANCIALS	12
SUPERHEROES UNITE AS VOLUNTEERS	13
SUPERHERO DONOR LISTS	14
SUPERHEROES LEAVE A LEGACY	16
LEGACY SOCIETY	17
WAYS TO GIVE	17
HOW TO SUPPORT FIVE ACRES	18





## DEAR FRIENDS,

Superheroes are benevolent individuals triggered by unusual circumstances that cause them to show up with superhuman powers to save the day. Everyday, our superheroes show up at Five Acres as clients, donors, volunteers, and team members. The pandemic year, Fiscal Year 2020-2021, demonstrated, once again, the superhuman powers these individuals have when we were faced with numerous challenges.

We geared up to face the challenges of mandated federal reforms to programs serving foster youth while continuing to keep our doors open and sustain all programs, including residential, foster care, adoptions, and community-based services since the beginning of the pandemic. In the articles in this report, you'll read about our partnership with Carbon Health to provide COVID vaccines to children and staff while also continuing to provide onsite testing to keep everyone safe and healthy. Despite the challenges of COVID, Five Acres maintained a family permanency rate last year of 81% for children in our care. Our goal remains to ensure the children we serve stay safe, healthy and find a permanent family – the one they were born into or one that Five Acres helps to create.

We owe much of our success to our Five Acres team who worked diligently to continue meeting with clients to maintain services through a hybrid approach that included telehealth. Our volunteers also stepped up with in-kind donations and activities to ensure the children and families' needs were met throughout the year.

Despite the financial challenges many people, companies, and organizations like ours were faced with, our donor community continued to support us to financially sustain our programs and advance our mission. We simply could not do what we accomplished in FY 20-21 without the support of benevolent individuals and companies who believe in the mission to ensure safety, well-being, and permanency to 7,133 children and families.

Thank you to our superheroes who united in this past year and showed up every day with superhuman abilities that enabled us to meet our mission.



Chanel Boutakidis  
Chief Executive Officer



Sue McGuirl  
2020-2022 Board Chair



# Our mission and services

*FIVE ACRES PROMOTES SAFETY, WELL-BEING AND PERMANENCY FOR CHILDREN AND THEIR FAMILIES BY BUILDING ON THEIR STRENGTHS AND EMPOWERING THEM WITHIN COMMUNITIES.*

## PREVENTION

Preventing children from entering the foster care system is key to curbing Los Angeles' growing foster care and homelessness crisis. Five Acres' prevention services support families in the community by sending mental health and behavioral health specialists into the homes of children, youth and families.



## RESIDENTIAL

Every child should be raised by a loving family. Yet, when a child experiences acute trauma at home, living outside the home and within residential care is sometimes the best place to support children and families during the reunification process. At Five Acres, we provide short-term therapeutic homes for these children to restore balance, rebuild trust and reunify them with their families or connect them to loving foster-adopt families.

## PERMANENCY

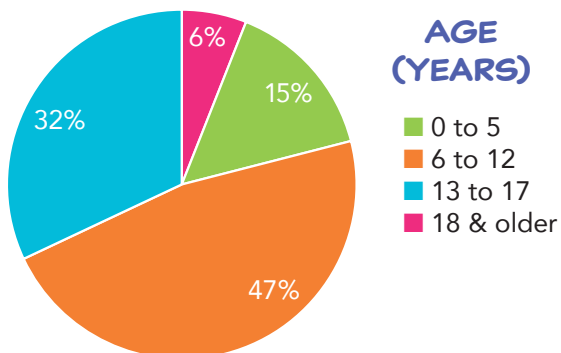
Five Acres actively strives to provide stability by connecting children to safe, permanent, and loving families. Our permanency services create loving homes for children in need through foster care, adoption and mentor support for families going through the adoption process. Through Adoption Promotion Support Services, we support children and adoptive families to nurture lifetime commitments.



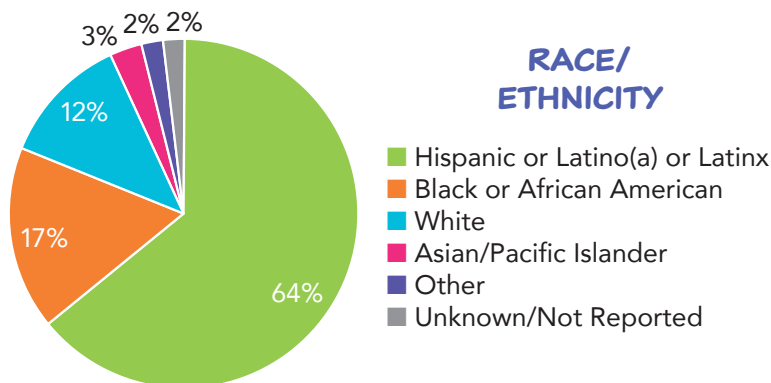
## Who We Serve

### CLIENT IMPACT

#### AGE (YEARS)



#### RACE/ ETHNICITY





### COMMUNITY BASED SERVICES

Through our Community Based Services, we provide one-on-one, short-term intervention for youth and individualized mental health services to children, youth and their families. While our staff provide traditional mental health services, our Community Based Specialty Division also focuses on specialized preventative and early intervention services to keep children safely in the home and improve the overall quality of life for the children and families we serve. In addition, our Deaf Services remains the only provider of community-based counseling to individuals who are deaf in Los Angeles County.

### PRIVATE HEALTH CARE SERVICES

We partner with private health care organizations across Southern California to provide access to intensive services for children to keep them safely in their own home and community. Through our care, we help lower the child's risk of psychiatric hospitalization and prevent the need for out-of-home congregate care placements.

Five Acres continues to serve vulnerable children and families. In 2020-2021, we impacted the lives of 7,133 children and their families across five counties. During COVID, not all families in our outpatient programs were able to access care via telehealth, which resulted in a decreased number of persons served. However, Five Acres provided more therapy to the families we did serve given the stressors that this past year has brought. In addition, our inpatient programs had a 44% drop in the number of new clients served due to COVID halting intakes and discharges as a result of county and court closures.

# SUPERHEROES UNITE!

## In Diversity Initiative

Superheroes come in all ages, races, and vocations. Many important activities raised a call for voice in 2020, and like many, Five Acres recognized the critical timing to strategically form a Social Justice, Equity, Diversity, and Inclusion (SJEDI) committee that addresses issues of social justice, diversity, and equity. Building on the Board of Directors' commitment to fostering a diverse, inclusive, and socially responsible board that represents the community we serve along with the Five Acres staff leadership at large, our culture is defined by the way we share a variety of experiences, perspectives, values, and beliefs.

Five Acres' diverse staff leadership is comprised of 21 females and 7 males whose ages span from 30 to 69 with varied race and ethnicity composition, and specialties range from clinical, program, finance, public administration, IT, HR, training, systems, development facilities, contracts and policies. The direct staff also mirrors the makeup of the agency's diverse clients. Rehab specialists, clinicians, executive assistants, unit program coordinators, crisis intervention specialist team members, and supervisors across the agency and across departments expressed interest in joining this newly-formed SJEDI committee.

In the past fiscal year, Five Acres had 12 SJEDI committee members who helped lead the way and informed Five Acres' work and practices. Dedicated to addressing numerous issues that impact a variety of audiences, members of the SJEDI specific to Black, Indigenous, and People of Color (BIPOC) have met with interested staff in a welcoming, safe environment. Committee members have had the privilege of hearing from Five Acres' workforce as they have passionately shared why they remain committed to help move the agency forward. In addition, they have met with residential program staff as well for client participation to plan Black History Month activities and communications to commemorate and celebrate accomplishments made by Black leaders in our history.

The efforts of the agency stem from the Board that embraces candid communication, transparency, and the experience of all members to better understand the needs of the community and our agency. We acknowledge the superheroes who work each day to embrace the ever-changing environment, which mirrors the communities we serve.

# SUPERHEROES UNITE!

## In Safety

In fiscal year 2020-2021, we experienced coronavirus surges in hospitals, businesses, and communities. To curb the possible spread of the virus, we provided onsite COVID testing to our team members, making safety the priority for all on campus.

When the Centers for Disease Control approved vaccinations for youth 16 years and older, we were ecstatic to partner with Carbon Health, who quickly coordinated onsite vaccination for youth eligible and staff desiring to be vaccinated. Like superheroes who save the day, the Carbon Health team, along with our Residential Program team and nursing staff, worked together to coordinate a seamless experience for the youth and staff.

"Carbon Health's mission is to make high-quality healthcare accessible to everyone, especially underserved communities like foster care children. Often, that means meeting people where they are, whether at a community center or at an agency like Five Acres," said Dr. Sujal

Mandavia, Chief Medical Officer of Carbon Health. "Including our partnership with the City of Los Angeles, Carbon Health has played a key role in administering more than 1.5 million COVID-19 vaccines, and we are proud to partner with Five Acres to bring this life-saving healthcare to their foster care community."

While administering the vaccine, Five Acres and Carbon Health personalized the experience to meet the needs of the youth in foster care by making them feel comfortable and taken care of. Extra efforts to allow the youth to relax and not feel rushed during the vaccination event included an onsite petting zoo, ice cream truck, and longer vaccination windows.

Both youth and team members vaccinated experienced a greater sense of hope and personal safety, all due to the superheroes who administered the vaccine and to the courageous individuals who accepted the challenge of being vaccinated.





A photograph of four children of diverse backgrounds smiling and holding onto a red metal playground structure. The children are of various ages and ethnicities, all appearing happy and engaged. The background is a bright, sunny outdoor setting with blurred greenery.

## *CLIENT IMPACT*

WHEN CLIENTS LEFT FIVE ACRES, 76% LEFT WITHOUT ANY SAFETY CONCERNS AS MEASURED VIA THE CHILD AND ADOLESCENT NEEDS AND STRENGTHS (CANS). THIS IS A 5% POINT INCREASE COMPARED TO THE PREVIOUS FISCAL YEAR. CHILDREN'S PROGRESS OVER TIME IS ASSESSED WITH THE CANS TO DETERMINE OUR AGENCY'S EFFECTIVENESS IN MEETING THEIR GOALS.



# SUPERHEROES UNITE!

## In Well-being

As many individuals worked remotely, children attended school on Google classroom, and families were overextended during the pandemic, all struggled with fatigue. Working, going to school, and living in the same space, many individuals found themselves blurring the boundaries.

Mental health is a priority for our clients and ensuring the continuity of services was essential. Staff quickly pivoted to providing telehealth services within five days, a challenge that our superhero team was up for, enabling our staff to fulfill the contractual commitments we had with government agencies.

"The anxiety and stress due to the COVID pandemic exacerbated mental health issues and we saw an increased need for mental health services," said Chief Program Officer of Prevention Programs Chinling Chen, a licensed clinical social worker. "Telehealth services allowed us the ability to continue to provide needed services to our clients and removed concerns the families may have about receiving in-person services."


We were able to expand and leverage our telehealth through the ongoing pandemic, demonstrating the effectiveness of our services, reduction in clinical symptoms, enhanced well-being, and improved access to care. Our team had to onboard new platforms quickly and train our staff in how to use them, in addition to assess the parameters to support the families on their caseload.

"It was a learning curve for all of us, but we are committed to ensuring the pandemic does not impact the children and families' ability to

access mental health services," said Chinling, who also acknowledged that health care and service providers were also struggling with the same stressors and challenges as our clients. "I'm grateful for the Wellness Committee and its focus on supporting the wellness of our team members."

The Wellness Committee was formed in 2015 and served its workforce in superhuman ways this past fiscal year. While isolation and quarantine were everyday occurrences for many, the Wellness Committee united our workforce and engaged them in physical, mental, and emotional well-being. From challenges for staff to get them moving and stay connected to posting healthy recipes and exercise videos, the goal is to provide education and initiatives to inspire staff to lead a more balanced and healthier lifestyle.

"When you're feeling better it affects every aspect of your life, which includes your work life," said Kate McGevna, Program Manager Training. "We spend so much of our time at work; we want to be able to enjoy it and feel good when you're there. Five Acres makes staff wellness a priority and regards it so highly that they put resources into helping people feel better."



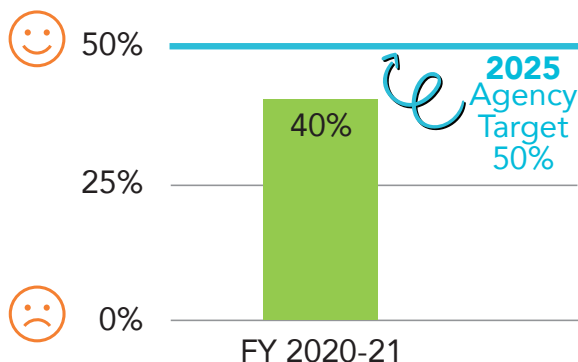
**EVEN  
SUPERHEROES  
NEED TO RECHARGE THEIR  
SUPERHUMAN POWERS TO SERVE  
CHILDREN AND FAMILIES.**





## CLIENT IMPACT

### PEDIATRIC SYMPTOM CHECKLIST-35



The Pediatric Symptom Checklist-35 is a brief screening questionnaire to recognize problems and inform clinical decision making for our children.

This past fiscal year, clients came to us with more mental health concerns. Despite the many challenges presented during the pandemic, we were able to maintain and even exceed the amount of improvement compared to the previous fiscal year. In fiscal year 20-21, 40% of clients at Five Acres demonstrated clinically significant improvement in their general mental health well-being. This is a 6% point increase compared to fiscal year 19-20. Our goal is to reach 50% by 2025!



# SUPERHEROES UNITE!

## In Permanency

In 2020, there were 21,876 children in the Los Angeles foster care system. Foster-adoptive parents are everyday superheroes who care for these children. Their superhuman strengths vary just like their path to permanency. Before coming to Five Acres, Gina Barker-Foster and Dana Foster unexpectedly took in Gina's biological niece and nephew for what they thought would be days, which turned into years and a forever home.

With a daughter of their own at home and now two children who had been adopted, their only son wanted a brother. Gina and Dana decided to get more information on foster care and adoption at an event where they met Ivon Favela, our recruiter and trainer. Looking to be a home for children in foster care, they became certified and approved to be foster care parents.

Getting the first call, Gina recalls she did the opposite of what Ivon advises foster care parents to do. Without waiting to hear the details, she said yes to a two-year-old boy, who was the youngest of nine siblings and had been in seven placements. With only a few days to transition, the local PTA at one of the children's schools "threw us a baby shower and we had everything we needed before he came to our house."

"One thing that is unique about Gina and Dana's story is how they have accessed multiple services," said Ivon. They participated in respite care, a service where one family supports another family for a short amount of time (from one day up to one week). This allows for a child's original home to take time for self-care or family emergencies. "These parents really helped a family put siblings together. This family needed to move into a bigger place, but while they were moving, they needed a home for the baby."

"We saw how important it was for [our children] to stay together and what their relationship was in their shared experiences to help them get through everything that they had to go through during the time they were removed from their biological parents," said Dana. "So it was important for us to be able to assist [another family] in some way."

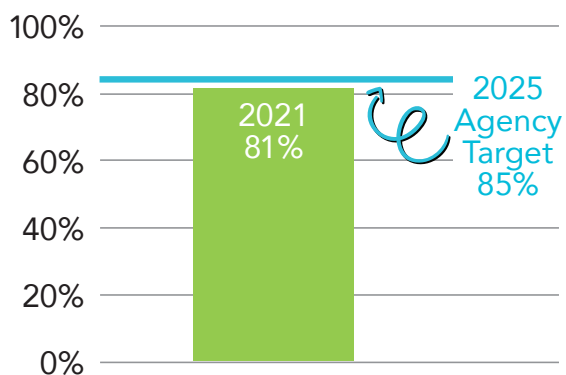
Gina and Dana opened their home and superhuman hearts to many children in need, including siblings from their children. Working together with our team members, who also provide support to children and adoptive families to nurture lifetime commitments, expedite the adoption process, and reduce adoption disruption, Gina and Dana are examples of everyday superheroes whose hearts of service offer pathways for permanency.

**TO HEAR MORE ABOUT GINA AND DANA'S JOURNEY, VISIT  
OUR PODCAST AT [HTTPS://5ACRES.ORG/FIVE-ACRES-PODCAST/](https://5acres.org/five-acres-podcast/)  
OR YOUTUBE AT [HTTPS://BIT.LY/PERMANENCYEPISODE](https://bit.ly/permanencyepisode)**





### % OF CLIENTS WHO ACHIEVED PERMANENCY



Despite the pandemic and the added stressors that our families were presented with, we were able to maintain an 81% permanency rate for our families.



# LEADERSHIP

# 2020-2021

## EXECUTIVE BOARD

Sue McGuirl, Board Chair  
Chris Kerns, Past Board Chair  
Shoshana Puccia, Board Secretary  
Grace Russak,  
Vice Chair, Finance/Investment  
Chris Selak,  
Vice Chair/Advancement  
Rustin Mork,  
Vice Chair, Nominating and Audit  
Don Boline,  
Vice Chair, Administration

## BOARD OF DIRECTORS

Chantal Bennett  
Mimi Carter  
Andrew Crowell  
Sam Greenberg  
Kirsten Hansen  
Celeste Liversidge  
Jason Melillo  
John Reitnouer  
Nicole Rodger  
Erica Tejada

## CHILDREN'S GUILD

Ruth Coyne and Florence Nelson,  
Co-Presidents

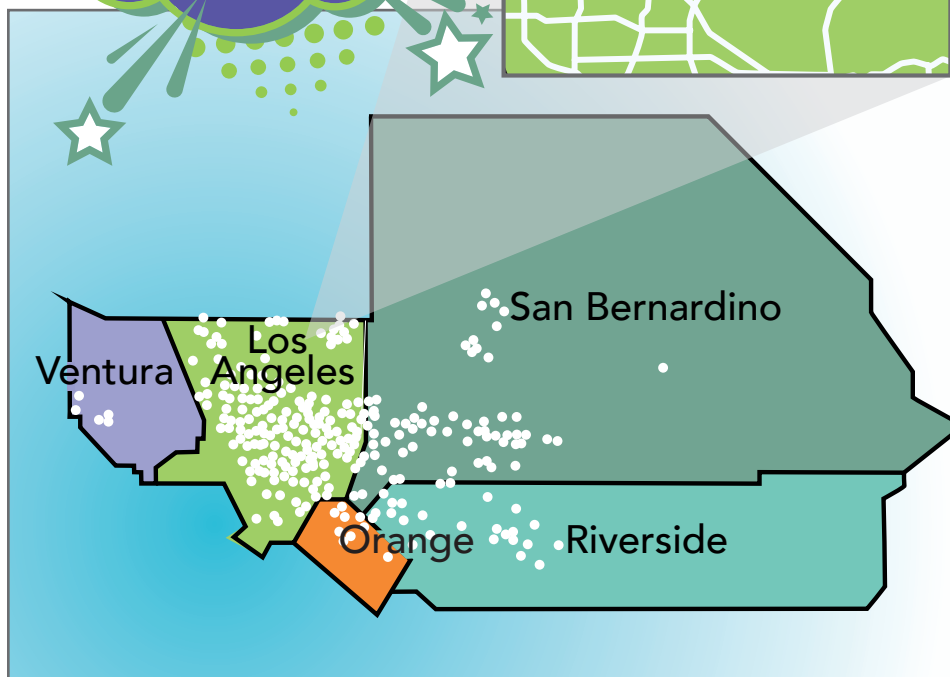
## SENIOR LEADERSHIP

Chanel Boutakidis, MA, MFT  
Chief Executive Officer  
Jennifer Berger, MPA  
Chief Advancement Officer  
Chinling Chen, LCSW  
Chief Program Officer, Prevention  
David L. Graft,  
Chief Financial Officer  
Elizabeth Gonzalez, MA, LMFT,  
Chief Program Officer, CCR  
Rachel McClements, PsyD,  
Chief Operating Officer

## OFFICE LIST

- 1 Colby and Keck Buildings**  
704 W. Mountain View St.  
Altadena, CA 91001  
Ph: (626) 798-6793  
Fax: (626) 797-7722
- 2 S. Robert and Denise Zeilstra Research & Training Center**  
747 W. Mountain View St.  
Altadena, CA 91001  
Ph: (626) 798-6793  
Fax: (626) 797-7722
- 3 Robert Ketch Administration Building**  
760 W. Mountain View St.  
Altadena, CA 91001  
Ph: (626) 798-6793  
Fax: (626) 797-7722
- 4 Fair Oaks Location**  
867 N. Fair Oaks Ave.  
Pasadena, CA 91103  
Ph: (626) 993-3100  
Fax: (626) 585-1664
- 5 West Covina Location**  
2934 E. Garvey Ave. South  
Suites 100A, 102 and 242  
West Covina, CA 91791  
Ph: (626) 214-0301  
Fax: (626) 214-0303

## SERVICE AREA

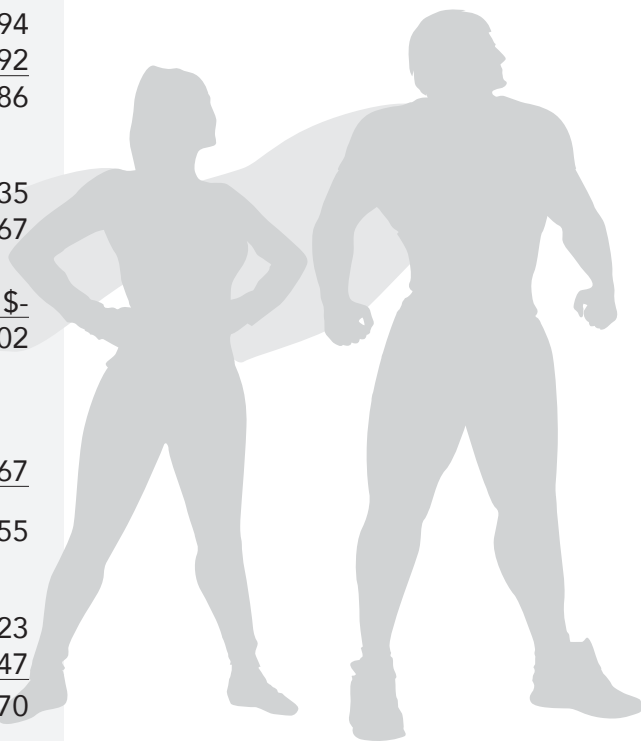




# AUDITED FINANCIAL STATEMENT

	2020	2021
<b>ASSETS</b>		
Cash	\$10,088,043	\$14,139,820
Investments	\$15,398,811	\$19,120,294
Accounts Receivable	\$2,481,755	\$2,644,141
Collection	\$195,000	\$195,000
Pledges Receivable	\$28,800	\$38,472
Other Current Assets	\$1,038,479	\$1,392,646
Fixed Assets (net)	\$4,711,522	\$4,087,653
Total Assets	\$33,942,410	\$41,618,026
<b>LIABILITIES</b>		
Accounts Payable	\$681,949	\$907,137
Accrued Liabilities	\$3,468,239	\$6,684,596
Deferred Revenue	\$35,700	\$187,071
Government Owned Assets	\$149,423	\$64,038
Line of Credit	\$-	\$-
Paycheck Protection Program	\$5,394,077	\$5,394,077
Total Liabilities	\$9,729,388	\$13,236,919
<b>FUND BALANCES</b>		
Retained Earnings (unrestricted)	\$22,952,733	\$26,560,747
Retained Earnings (restricted)	\$1,260,289	\$1,820,360
Total Net Assets	\$24,213,022	\$28,381,107
Total Liabilities & Fund Balances	\$33,942,410	\$41,618,026
<b>PROGRAM REVENUES</b>		
Government Contracts & Service Fees	\$34,712,630	\$34,003,094
Other Programs	\$2,996,300	\$2,734,792
Total Program Revenues	\$37,708,930	\$36,737,886
<b>PUBLIC SUPPORT</b>		
Contributions & Bequests	\$1,818,563	\$1,402,135
In-Kind	\$280,738	\$632,767
Collections		
Special Events	\$153,225	\$-
Total Public Support	\$2,252,526	\$2,034,902
<b>OTHER REVENUES</b>		
Dividends: Gain/Loss on Investment	\$1,898,755	\$3,627,167
Total Revenue & Support	\$41,860,211	\$42,399,955
<b>Expenses</b>		
Program Services	\$33,941,035	\$32,163,223
Support Services	\$5,534,463	\$6,068,647
Total Expenses	\$39,475,498	\$38,231,870
Change In Net Assets	\$2,384,713	\$4,168,085

Most of Five Acres' funding comes from highly restricted government contracts, which don't always cover everything our clients need. Your charitable support is the game changer, empowering special programs and projects that enhance the safety, well-being and permanency for the children and families in our care.



# SUPERHEROES UNITE!

## As Volunteers

Five Acres Children's Guild, our flagship volunteer program, is a key element to our children's treatment team. Members contribute throughout the year by supporting birthday parties, monthly activities and special events that benefit the children living at Five Acres. The pandemic year presented challenges for members like Florence Nelson, who serves as a co-president of the Children's Guild along with Ruth Coyne.

Florence, a retired advocate for children's mental health programs for a national organization, didn't hang up her hat. She joined the Children's Guild in 2016 and continued to serve children. While the typical activities the members were used to coordinating didn't exactly pan out, they put their thinking hats together to continue addressing the children's needs. Delivering birthday cakes, fulfilling holiday wishes, and anything special requested of them, the members were quick to respond.

One memorable activity was the summer reading club that revolved



around the theme, Superheroes. "It was such a rewarding experience for everyone who helped with it, in part, because we hadn't had contact with the children," said Florence. "The response from the children was so gratifying."

Coming together in pairs on campus, members enthusiastically met with the children every week for seven weeks. They read engaging short stories since the range in age was broad and coordinated reading activities with the help from Altadena Library that provided 25 activity kits, which included books. Children would also get a chance to pick out their books for the week and earn prizes.

Guild Member Sally Olson, a retired English teacher, offered a poetry session and they examined lyrics from a song. They even staged scenes from "Charlie and The Chocolate Factory" and then showed the movie at the end of the day.

"Our goal is to communicate that someone in the world is caring for them even though they may be cloistered at Five Acres and away from their family," said Florence. "People in the outside world are watching out for them."

Florence and other Guild members' advocacy for the children is one superhuman power that brings our children comfort while they heal.





# Thank you!

## SUPERHERO DONOR LIST

### Philanthropy Circle and Cumulative Giving 2020–2021

We are profoundly thankful to Five Acres' generous and selfless donors who bring hope home for every child to have a loving, permanent family. Because of you, the futures for these children and families are brighter than ever.

## CUMULATIVE GIVING

Donors who have made significant cumulative gifts during the history of Five Acres.

### DIAMOND BENEFACTOR

(\$1,000,000.00 +)

The Ahmanson Foundation  
W.M. Keck Foundation  
Ralph M. Parsons Foundation  
Margie and Robert E. Petersen Foundation  
The Rose Hills Foundation  
United Way of Greater Los Angeles  
Helen and Will Webster Foundation  
Weingart Foundation

### PLATINUM BENEFACTOR

(\$500,000.00 - \$999,999.99)

Burton G. Bettingen Corporation  
Kathryne Beynon Foundation  
Crosby & Nash  
Jean Ellison Estate  
Anne and Courtney Marculescu  
Margaret Milligan - Omar B. Milligan Enterprises  
Jenell Newhouse Estate  
Pasadena Community Foundation  
Wells Fargo  
Marilyn and John Wells

### GOLD BENEFACTOR

(\$250,000.00 - \$499,999.99)

The Annenberg Foundation  
Anonymous (2)  
Auxiliary of Five Acres  
BCM Foundation  
The Estate of Frank Brill  
Change a Life Foundation  
Andrew and Keri Crowell  
Don G. Erickson Trust  
Fair Oaks Professionals, LLC  
The Green Foundation  
Rose Harrington Estate  
Hutto-Patterson Charitable Foundation  
In-N-Out Burger Foundation  
The Los Angeles Times Family Fund  
Donald and Georgette Mareina  
McCreight Foundation  
Donivee and Merrill Nash  
The Kenneth T. and Eileen L. Norris Foundation  
The Patron Saints Foundation  
Randall and Candy Renick  
SHARE, Inc.  
The Smashing Pumpkins  
Jonette Strasburg Trust  
S. Mark Taper Foundation  
Beth Uffner and Robert Goldfarb  
Anne Saunders Walls Estate  
Mabel C. Williamson Estate

### SILVER BENEFACTOR

(\$100,000.00 - \$249,999.99)

Catherine and Casey Adams  
Sharon Faye Alferi  
All Saints Church  
The Angell Foundation  
Anonymous (5)  
Avery Dennison Foundation  
Avon Foundation for Women / Avon Products, Inc.  
Chantal and Stephen Bennett  
Bolton & Company  
Lorraine Brakebill Estate  
James M. Brayshaw Jr.  
California Community Foundation  
Stephen and Susan Chandler  
Christine and Jay Davis  
The Carl & Roberta Deutsch Foundation  
The Eisner Foundation  
Judith and Stanley Farrar  
Five Acres Children's Guild  
Rob Floe / Floe Financial Partners, Inc.  
Arthur J. Gallagher & Co  
Giannini Foundation  
Elaine R. Gilbertson Estate  
Tom and Page Haralambos  
William R. & Virginia Hayden Foundation  
Tsutayo Ichioka & Satsuki Nakao Charitable Foundation

J. W. and Ida M. Jameson Foundation  
Robert A. Ketch and Colleen Friend  
Walter Lantz Foundation  
The Thomas and Dorothy Leavey Foundation  
Youssef and Kamel Mawardi Fund  
Mericos Foundation  
Mariann and Thomas Nolan  
Peter Norton Family Foundation  
Orange County Community Foundation  
Pasadena Child Health Foundation  
Ann Peppers Foundation  
Pfaffinger Foundation  
Ernie and Gunde Posey  
QueensCare  
Brad and Lorraine Reaume  
Rincon Foundation  
Schwab Charitable Fund  
Lon V. Smith Foundation  
Joanne Stanley Estate  
Estate of Alice C. Taylor  
Teradata Corporation  
The Tissue Foundation  
Tryad Properties Inc  
J.B. and Emily Van Nuys Charities  
Venable Foundation, Inc.  
Denise and S. Robert Zeilstra  
J.B. and Emily Van Nuys Charities  
Denise and S. Robert Zeilstra

## PHILANTHROPY CIRCLE

### VISIONARY CIRCLE

(\$100,000.00 +)

The Rose Hills Foundation  
Jonette Strasburg Trust  
Helen and Will Webster Foundation

### HUMANITARIAN CIRCLE

(\$50,000.00 - \$99,999.99)

Anonymous  
Kathryne Beynon Foundation

### BENEFACTORS CIRCLE

(\$25,000.00 - \$49,999.99)

Michael J. Connell Foundation  
Mary James  
Johnny Was  
Youssef and Kamel Mawardi Fund  
The Kenneth T. and Eileen L. Norris Foundation  
The Patron Saints Foundation  
QueensCare  
Schwab Charitable Fund  
Venable Foundation, Inc.

### CHAMPIONS CIRCLE

(\$10,000.00 - \$24,999.99)

Adams-Mastrovich Family Foundation  
American Endowment Foundation  
Anonymous (2)  
Blue Shield  
Andrew and Keri Crowell  
Georgina Frederick Children's Foundation  
Huntington Culinary, Inc.  
Tsutayo Ichioka & Satsuki Nakao Charitable Foundation  
In-N-Out Burger Foundation

Insurance Industry Charitable Foundation  
Johnny Carson Foundation  
Corina and Ari Madilian  
Susan P. McGuirl and Bob Musselman  
Jason and Billie Melillo  
Orange County Community Foundation  
Pasadena Community Foundation  
Brad and Lorraine Reaume  
Rite Aid Foundation  
Tryad Properties Inc

**ADVOCATES CIRCLE**  
(\$5,000.00 - \$9,999.99)

Sharon Faye Alferi  
Anonymous  
James A. Avedikian  
Chantal and Stephen Bennett  
Don and Jill Boline  
Cathay Bank Foundation  
GGE Foundation, Inc. - Gail Ellis  
Fidelity Charitable Gift Fund  
Arthur J. Gallagher & Co  
Hahn & Hahn LLP  
KBKG, Inc.  
Alan Kulawik  
Richard and Mary Mader  
Majestic Realty Foundation  
Samantha Malisos  
National Breast Cancer  
Coalition  
Posey Family Fund -  
Posey and Gunde Posey  
Nicole Rasic  
Renaissance Charitable  
Foundation, Inc.  
Grace and Kenneth Russak  
Christine V. Selak  
United Concordia  
United Way of Greater  
Los Angeles  
US Bank  
Estate of William P. Weinberg

**AMBASSADORS CIRCLE**  
(\$2,500.00 - \$4,999.99)

1st Century Bank  
Anonymous  
The Berns Team -  
Keller Williams Realty  
Christine and Jay Davis  
East West Bank  
Facebook  
Goodwin Family Memorial Trust  
Laura Gordon  
Samuel and Amy Greenberg  
William R. & Virginia Hayden  
Foundation  
Bo Hu and Rui Yang  
Brad and Pam King  
Virginia M. Konzelman  
Greg and Lauren Lercel  
Paul and Linda Maurin  
Robert London Moore, Jr.  
Morgan Stanley  
Ronald Newburg  
Foundation Inc.  
Kathleen and Daniel Nikolai

Raymond James Charitable  
Endowment Fund - Family of  
Paschel and May Rose Young  
John and Susan Reitnouer  
Nicole and Robert Rodger  
Roncelli Plastics, Inc.  
RunSignUp  
Warren and Katharine Schlinger  
Foundation  
Smarter Every Day LLC  
Mr. Philip Swan  
Whittier Trust Company  
Judy Young  
Dr. Lee Zuckerman M.D.

**ASSOCIATES CIRCLE**  
(\$1,000.00 - \$2,499.99)

Catherine and Casey Adams  
Brian and Brittany Anderson  
Anonymous  
Anonymous  
Vincent Anzalone  
Ascent Private Capital  
Management of US Bank  
Brett Barnard  
The Benevity Community  
Impact Fund  
Donald and Karen Bishop  
Annette and Sheldon Bull  
Michael A. Burke  
Mimi and Paul Carter  
Charities Aid Foundation of  
America  
Computershare  
Faith and John Conklin  
Jean-Jacques and Susan Dupre  
Anne and Gail Eckles  
Beth E. Fabinsky  
Fair Oaks Professionals, LLC  
Naomi Farley  
Robert J. Floe /  
Floe Financial Partners, Inc.  
Frontstream  
Kathleen R. Baumann and  
Michael R. Girvigian, MD  
Scott and Norma Grannis  
Charles Hackerman  
Matthew Housman  
Innabi Law Group APC  
Intact Insurance  
Patricia A. Johnson  
Michael and Georgina Hamilton  
Christianne and Charles Kerns  
Nicole Klyczek  
Kelley Bannon Lashley and  
Daniel C. Lashley

Lee & Associates - Pasadena -  
John Berger  
Magna Carta Foundation Inc.  
Anthony McMahon  
Mission Driven PR, Inc.  
Mixed Roots Foundation  
Network for Good  
Jenney Oh  
John and Verna Parrish  
Anne B. Peterson  
Prudential Financial  
David and Laura Quigg  
Richard Dunn Family Foundation  
Dionne L. Riddle  
Lois Rosen  
Julie Rosenthal  
Linda and George Sakellariou  
Margaret H. Sedenquist -  
Sedenquist Fraser Enterprises  
Katherine Solaini  
Southern California Edison  
Company  
Ann H. Stewart  
Marcus and Eisanne Tanimoto  
Laura and David Turner  
Vroman's Bookstore  
Robert A. Waller Foundation  
Wells Fargo  
Wescom Credit Union  
Susan and Dan Wier  
Carol and Robert Williams  
Cathleen and Timothy  
Woodington

**FRIENDS CIRCLE**  
(\$500.00 - \$999.99)

Richard Acosta  
AmazonSmile Foundation  
Anabel Higgins Jewelry  
Bruce H. Babcock and  
Barbara L. Vang  
Habib Balian  
Bank of America Charitable  
Foundation  
Linda A. Barrett Walsh and  
James Mike Walsh  
Berkshire Taconic Community  
Foundation  
Beth Fishbein Hansen (Fdn)  
Marla E. Borowski  
Louis and Mary Caron  
Community Foundation For  
Monterey Co  
D. A. Davidson Companies  
Janet and Edgar Davis  
Catherine Deely

Paul and Tama Deitch  
Elizabeth and Jeff Dixon  
Fidelity Brokerage Services LLC  
Traute and Willard Gleeson  
Bahareh Gordon  
Diana Hardy  
Jana Hejdukova and  
Stephen Coleman  
Karen Humphrey  
Sarah P. Keenan  
Catherine A. Keig and  
James S. Hayes  
Law Offices of Donald P.  
Schweitzer  
Samantha Leddell  
Roberta Lewis  
Ben H. Logan  
Toni Long  
William C. MacMillen III  
Paul Mahone  
Tania Makshanoff  
Karen and Jack Margolis  
Rebecca Mason  
Corey Miller  
Cary and Sharon Mitchell  
Nicolas Mosaquites III  
Doncella M. Mumolo  
Ricardo Navarro  
Michael Newkirk and  
Olivia Garfield  
Lawrence and Nancy Nikolai  
Jason Owens Family  
The Persico Family  
Sarah Peterson and  
Grailing Jones  
Evelyn Pickering  
Price Waterhouse Coopers LLP  
Josh Pyatt  
Daniel A. Reedy  
Tracy and Stuart Rekart  
Rose and Bruce Remz  
James Roser  
Karen C. Ryan  
Shaulon Shanklin  
William P. Skipper and  
Jennifer L. Hammond  
Steve Sun  
Shannon Thyne  
United Charity Foundation  
United Way of Orange County  
Michael Velazquez  
Walt Disney Company  
Foundation  
Kathy and Warren Wimmer  
Joan Winchell  
Elena Yau

This annual report covers the fiscal year beginning July 1, 2020 and ending June 30, 2021. Gifts received after June 30, 2021 will be acknowledged in the next annual report. We have made every effort to ensure that the information included here is correct. If an error or omission is noted, please accept our apology and kindly contact Brandon Ito at (626) 390-8453.



# SUPERHEROES

## Leave a Legacy

Superheroes leave their mark on the world. Billie Youngblood-Knolle was no exception.

Joining the board in the 1980s, Billie used her superhuman communications skills and marketing wit to lead the agency's outreach efforts. Billie gained her expertise over a decade at LIFE magazine as a writer and manager in media, then later at Peat, Marwick, Mitchell (now KPMG) leading their initial Los Angeles marketing-communications team.

A pioneer in her time, Billie's focus at Five Acres was to strengthen branding, marketing, and communications in support of both mission and development. Her son Bill Youngblood remembers how his mother involved him in the life of Five Acres. "She asked me to create photography for her update of the annual report to best practices in 1986. And since, at the beginning of her board tenure, Five Acres did not have outside communications resources, she asked for 'all hands on deck' to make it happen. It proved a wonderful commitment. I continued to assist Five Acres for over two decades."

Along the way, Billie was introduced to Cathy Clement who was selected as Development Director and served for 24 years, as well as Deborah Laux, a graphic designer who worked on the annual report design and production for many years. "Billie connected many helpful individuals to Five Acres mission— by showing interest in others' stories, networking came naturally to her."

Billie recognized the community's need for Five Acres. She also held a warm affection for the professionals and volunteers who accomplished our mission in her era including Bob Ketch, Bill Shennum, and the gifted teachers including Nancy Goodell, and Sandy Biery. Ultimately, she turned her words to action. As Bill pointed out about his mother, to Billie "love was a verb rather than a noun." She included Five Acres in her estate planning, leaving a legacy on the night she peacefully passed away on December 13, 2020. She was 97.



*Billie Youngblood-Knolle  
October 25, 1923 - December 13, 2020*

Her gift of compelling storytelling elevated Five Acres visibility and placed it on the map in our community, as well as positively impacting the lives of the children and the families we serve.

# *Five Acres Legacy Society Members*



The Five Acres Legacy Society was formed as a way for like-minded humanitarians to serve future families in need. By including Five Acres in your estate planning, you ensure the safety, well-being and permanency of Southern California's children as if they were your own.

Leaving your own legacy as a child and family advocate is not a complicated process. If you have a special place in your heart for our mission, we encourage you to consider including Five Acres in your estate plans or trust. Many options are available that may enable you and your family to enjoy a tax benefit now or at the time your estate is settled.

If you have already included Five Acres in your estate plan, please reach out to us. We would like to honor you through the Legacy Society to acknowledge your inspiring generosity and compassion for others. If you are considering a planned gift, please contact Jennifer Berger at (626) 773-3749 or [jberger@5acres.org](mailto:jberger@5acres.org) to learn the many ways you can establish a meaningful legacy of your own. On behalf of the children and families we serve, thank you!



## LEGACY SOCIETY

Corrine Abel Estate  
 Carolyn G. Adams  
 Raymond Andersen Trust  
 Anonymous  
 James A. Avedikian  
 Horace and Victoria Baker Family Trust  
 Harold Baloyan  
 Jennifer and John Berger  
 Jean Blackburn  
 Lorraine Boatenhamer Trust  
 Chanel and Ioakim Boutakidis  
 Carole and Jack Brady  
 Lorraine Brakebill Estate  
 James M. Brayshaw Trust  
 Todd A. Brewer  
 Mary Brigham Estate  
 Frank Brill  
 Ann Garland Brown  
 Lifetime Trust  
 David W. Bryant  
 Dianne Bukata  
 Ruth Cashy Estate  
 John Chun  
 William M. Clark  
 Cathy and Paul Clement  
 Mary G. Colby Estate  
 Dorothy and Charles Cook Estate  
 Michael and Georgia Coyo  
 Andrew and Keri Crowell  
 Davis Family Trust  
 Ryan D. Dietz  
 Henry Dupuy Estate  
 Jean Ellison Estate  
 Don G. Erickson Trust  
 William Eskew Estate  
 Judith A. Farrar  
 Robert J. Floe  
 Elizabeth D. Forster  
 Elaine R. Gilbertson Estate  
 Mollie Graham Estate  
 Elizabeth Greenberg

Eleanor Hague Estate  
 Noel Hanson  
 Rose Harrington Estate  
 Hugh and Nancy Helm  
 Harcourt Hervey Esq.  
 Martha B. Hogan  
 Anne H. Janssen Estate  
 Christianne F. Kerns  
 Estate of Carl A. Kersey  
 Virginia Kineston  
 Janet Kirtlan  
 Debi Kroman  
 Kelley Bannon Lashley and Daniel C. Lashley  
 Pauline W. Ledeen Estate  
 Harry Long  
 Fred Losch Estate  
 Leslie A. Lyons  
 Shawn C. Mackey  
 Tania K. Makshanoff  
 Anne and Courtney Marculescu  
 Patricia Anne Martin  
 Frances L. Mayo Estate  
 Richard A. McDonald, Esq.  
 Everett G. McDonough  
 Katheryn McEachern Estate  
 Leonard McGee  
 Jeffrey R. McGraa  
 Christine McKenzie  
 Jessica Miller  
 Margaret Milligan, Omar B. Milligan Enterprises  
 Kay Mobus Estate  
 Roger Molvar  
 Chiyon Y. Moore  
 Margaret Mowery Moore Trust  
 Christopher Morphy  
 Brian Nash  
 Jane F. Neilson Trust  
 Jenell Newhouse Estate  
 Mariann and Thomas Nolan  
 Ruth and Kenneth Olson

Estate  
 Dr. Chris Pahl  
 Jane V. Palmer  
 Lilly M. Petersen Trust  
 Hazel F. Peterson Trust  
 Dorothy J. Phillips Estate  
 Maxine Pittroff  
 Ernest Posey  
 Shoshana Puccia  
 Marjorie Reedtz  
 Charlotte and John Reith  
 Susan Rhoades  
 Mrs. J. Randolph Richards  
 Michael and Anne Riffey  
 Karen C. Ryan  
 Elzada F. Schweitzer Estate  
 Margaret H. Sedenquist  
 Sarah R. Simonds  
 Emily Bishop Simpson Estate  
 Helen Drake Smetz Trust  
 Joanne Stanley Estate  
 Marty Stewart  
 Jonette Strasburg Trust  
 Dorothy Stromberger Estate  
 Ingeborg Talbert  
 Lois M. Tandy  
 Estate of Alice C. Taylor  
 Sarah Taylor Estate  
 Giulio Varsi  
 Delores A. Walker Trust  
 Walli D. Wallis Trust  
 Anne Saunders Walls Estate  
 Estate of William P. Weinberg  
 Gretchen M. Wiechman  
 Susan B. Wier  
 George N. Williamson Estate  
 Mabel C. Williamson Estate  
 Marjorie K. Wyatt  
 Billie K. Youngblood  
 Denise and S. Robert Zeilstra



# Ways to Give



**ONLINE:**

[5acres.org/donate](https://5acres.org/donate)

### BY CHECK:

Five Acres  
 760 W. Mountain View St.  
 Altadena, CA 91001



**BY EMAIL:**

[giving@5acres.org](mailto:giving@5acres.org)

### BY PHONE:

Contact  
 Jennifer  
 Berger at  
 (626) 773-3749

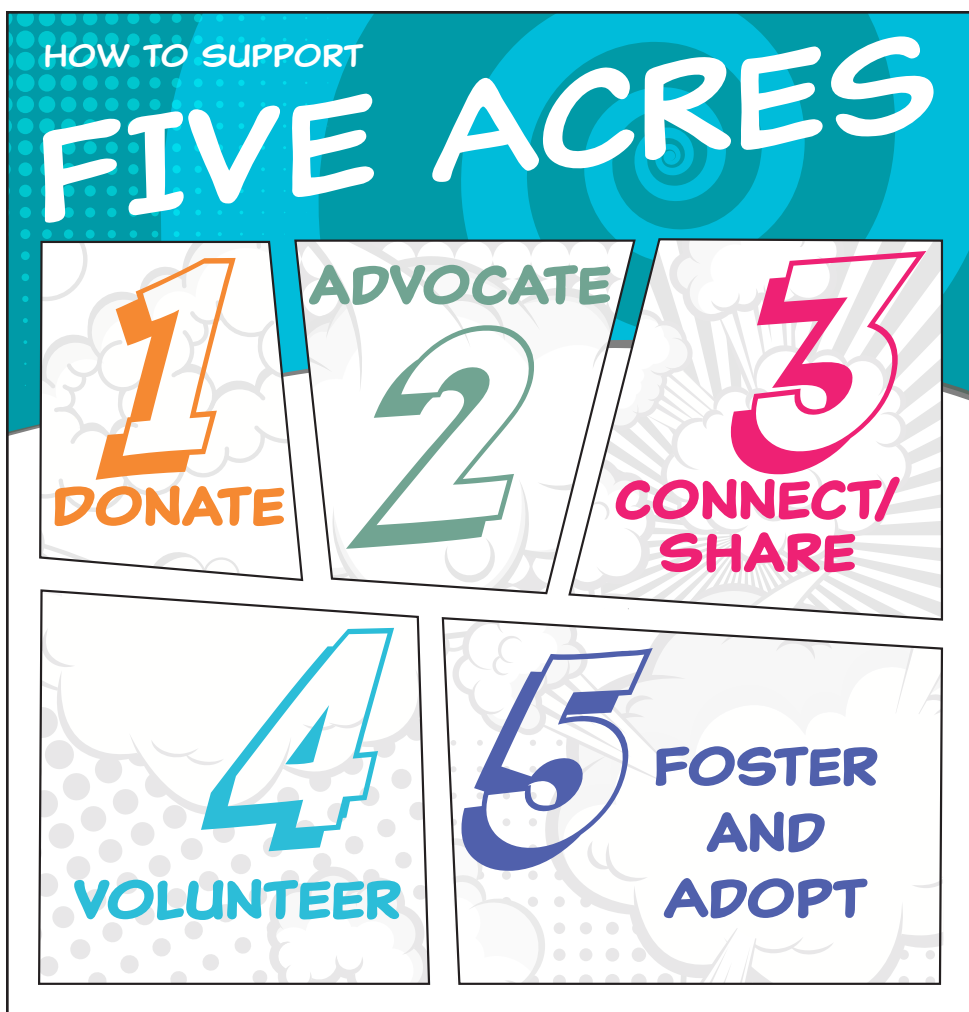


### GIFTS:

Consider a gift of stock or including Five Acres in your estate plan: Contact Jennifer Berger at (626) 773-3749 or [jberger@5acres.org](mailto:jberger@5acres.org)



Five Acres  
760 W. Mountain View St.  
Altadena, CA 91001



-  Facebook - [fiveacresorg](https://www.facebook.com/fiveacresorg)
-  Instagram - [fiveacresorg](https://www.instagram.com/fiveacresorg)
-  Twitter - [fiveacresorg](https://twitter.com/fiveacresorg)
-  YouTube - [fiveacreschannel](https://www.youtube.com/fiveacreschannel)
-  LinkedIn - [www.linkedin.com/company/fiveacres](https://www.linkedin.com/company/fiveacres)