

FIVE ACRES ANNUAL REPORT 2021-2022

# Celebrating 135 Years





# Dear Friends,



Chanel Boutakidis  
Chief Executive Officer



Sue McGuirl  
2020-2024 Board Chair

We are excited to celebrate our 135<sup>th</sup> birthday this year! While the annual report covers highlights from fiscal year 2021-2022, we want to also honor our past, embrace our present, and celebrate our future during this milestone occasion.

We have come a long way from 1888 when we opened in a small home on Glower Street in Los Angeles to our five acres in Altadena with numerous offices serving over 6,500 children and families across six counties, with San Diego as our newest county. The purpose of Five Acres has always been to provide safety and well-being for children who need the care from an agency like ours. After two decades of our involvement

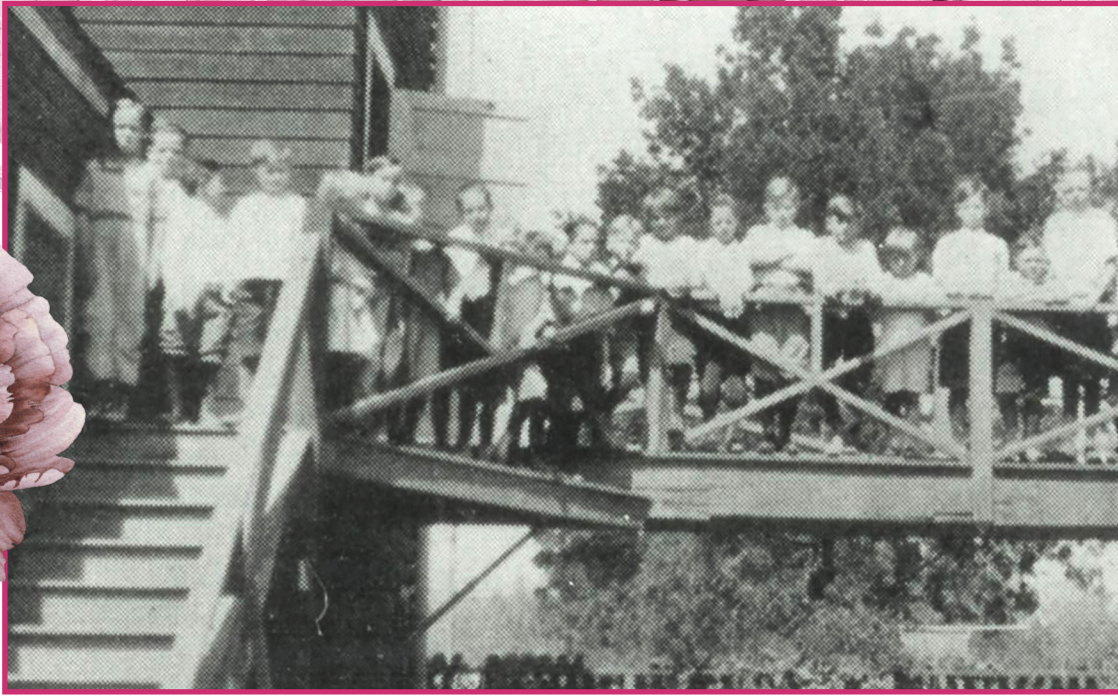
here at Five Acres, seeing the children on campus reminds us of the importance of them having a safe and forever family. We are continuously looking forward to ensuring each child has a loving, permanent family.

With our foster care and adoptions staff, we focus on finding forever homes for our children and youth awaiting to be adopted. Our permanency rate reached 84% when the state average is 30%. In this annual report, you'll read the story of Thomas Schultheis and Michael Warga who continue to make meaningful, permanent connections with teenagers who come into their home and begin to

*continues*

## Table of Contents

|   |    |                                     |    |
|---|----|-------------------------------------|----|
| Letter from the CEO/Chair .....           | 2  | Financials .....                    | 15 |
| Mission Statement and Services .....      | 4  | Celebrating Our Volunteers.....     | 16 |
| Historical Timeline .....                 | 5  | Donor Lists .....                   | 18 |
| Who We Serve: Client Data and Reach ..... | 7  | Celebrating Our Legacy Donors ..... | 21 |
| Celebrating Safety .....                  | 8  | Legacy Society.....                 | 22 |
| Celebrating Well-being .....              | 10 | Ways to Give .....                  | 23 |
| Celebrating Permanency .....              | 12 | How to Support Five Acres.....      | 23 |
| Leadership and Service Area .....         | 14 |                                     |    |



thrive. Overall, we are grateful to the families who open their hearts and homes and our supporters who invest in the lives of children in foster care so they can have a happy childhood.

Last year, the new California Advancing and Innovating Medi-Cal (CalAIM) Reform, which is behavioral health reform focused on improving access to mental health services and specifically for those insured through Medi-Cal, began with adult services. While the children's services are projected to start in October 2023, Five Acres was the first child service organization to sign a formal contract with one of the largest healthcare providers in California. We piloted services in Orange and San Diego counties at the start of this year, with plans for Los Angeles County in 2024. Providing these prevention services to children assures we strengthen families in the communities we serve. We continue to look ahead on how we can provide prevention services to curb children from entering foster care.

Sincerely,

Chanel Boutakidis  
Chief Executive Officer

This past fiscal year has been filled with momentous events. We have adapted the systemic changes and adjusted what needed to be redesigned with support from our incredible team members who work behind the scenes providing hours of planning and implementing the above actions. While these mandates were out of our control, we made significant changes that allowed us to find the opportunities yet stay as steady as possible operationally and fiscally.

With encouragement from our community of supporters, you continue to cheer us on, invest in our mission, and protect our legacy of having served over 100,000 children and families in our 135 years. The work each of you do matters. From the bottom of our hearts, thank you for supporting our mission.

Sue McGuirl  
2020-2024 Board Chair





# Our Mission and Services

Five Acres promotes safety, well-being and permanency for children and their families by building on their strengths and empowering them within communities.

## Residential

Every child should be raised by a loving family. Yet, when a child experiences acute trauma at home, living outside the home and within residential care is sometimes the best place to support children and families during the reunification process. At Five Acres, we provide short-term therapeutic homes for these children to restore balance, rebuild trust and reunify them with their families or connect them to loving foster-adopt families.

## Prevention

Preventing children from entering the foster care system is key to curbing Los Angeles' growing foster care and homelessness crisis. Five Acres' prevention services support families in the community by sending mental health and behavioral health specialists into the homes of children, youth and families.

## Permanency

Five Acres actively strives to provide stability by connecting children to safe, permanent, and loving families. Our permanency services create loving homes for children in need through foster care, adoption and mentor support for families going through the adoption process. Through Adoption Promotion Support Services, we support children and adoptive families to nurture lifetime commitments.

## Community Based Services

Through our Community Based Services, we provide one-on-one, short-term intervention for youth and individualized mental health services to children, youth and their families. While our staff provide traditional mental health services, our Community Based Specialty Division also focuses on specialized preventative and early intervention services to keep children safely in the home and improve the overall quality of life for the children and families we serve. In addition, our Deaf Services remains the only provider of community-based counseling to individuals who are deaf in Los Angeles County.



## Private Health Care Services

We partner with private health care organizations across Southern California to provide access to intensive services for children to keep them safely in their own home and community. Through our care, we help lower the child's risk of psychiatric hospitalization and prevent the need for out-of-home congregate care placements.





# Five Acres 1888-2022

**1888** Established as The Boys & Girls Aid Society in Los Angeles

**1903** Moved to a three-story building in South Pasadena

**1921** Purchased Altadena property  
Myron Hunt designed facility

**1926** Altadena facility opened  
A cottage named for key support group,  
Junior League of Pasadena

**1935** Officially changed from custodial care to casework

**1947** Adopted agency name, Five Acres

**1957** Joined Child Welfare League;  
achieved national accreditation

**1965** San Marino Auxiliary established

**1972** First community group home established

**1981** Opened therapeutic non-public school

**1984** Robert Ketch becomes Executive Director

**1985** Community- and home-based services  
opened

**1988** Centennial anniversary  
Five Acres Ambassadors established  
Foster care program added

**1990** Five Acres Children's Guild founded  
Deaf Services program began

**1992** New school building constructed

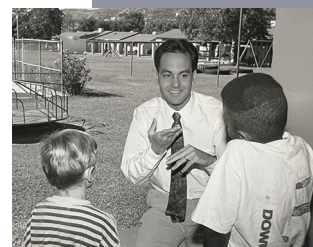
**1994** Family Preservation Program began

**2000** Therapeutic Behavioral Services added  
Adoption Agency established

**2004** Grace Center domestic violence affiliation began

**2005** Adoption Promotion & Support Services added

**2006** Wraparound program established





**2007** Pasadena Mental Health Center affiliation began

**2008** Intensive Treatment Foster Care began

**2009** Zeilstra Research & Training Center opened

**2010** Residentially Based Services started

Evidence based clinical practices  
qimplemented

**2011** Chanel Boutakidis became CEO

**2013** Five Acres celebrated its  
125th anniversary

**2015** Community Based Specialty  
Division established

**2016** Transitional Shelter Care program opened

Five Acres began primary healthcare  
partnership with one of the largest healthcare  
providers in California

**2018** Ketch and Solita Short-Term Residential  
Therapeutic Program contract started

Five Acres celebrated its 130th anniversary and  
the LA County Board of Supervisors proclaimed  
March 12 as Five Acres Day

**2020** Worldwide COVID Pandemic started. With the onset of  
the COVID-19 pandemic in March 2022, Five Acres rapidly  
transitioned most non-residential services to telehealth  
and expanded our technology

**2021** The Family First federal reform was announced and  
Five Acres pivoted to meet the new federal guidelines  
allowing to continue providing mental health  
services to children that have been traumatized

**2022** Five Acres was the first child welfare organization to  
negotiate a CalAIM contract with healthcare

**2023** Five Acres celebrates its 135th anniversary

Today, Five Acres impacts more than 6,500 annually  
across six counties – Los Angeles, San Bernardino,  
Ventura, Orange, Riverside, and San Diego

**Our focus in the coming years continues  
to be the growth of prevention services  
and the continued elevation of our  
permanency impact for children served**





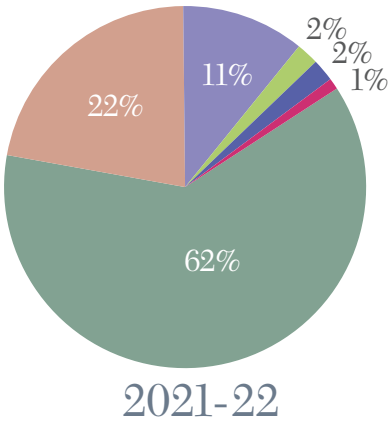
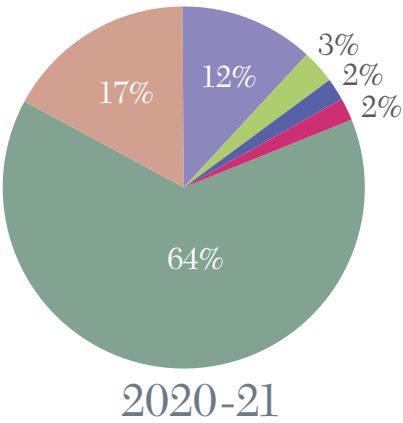


## Celebrating Our Reach

Five Acres continues to serve vulnerable children and families. In 2021-2022, we impacted the lives of 6,519 children and their families across five counties. During COVID, not all families in our outpatient programs were able to access care via telehealth, which resulted in fewer persons served. However, Five Acres provided more

therapy to the families we did serve given the stressors that this past year has brought. In addition, our inpatient programs had a 44% drop in the number of new clients served due to COVID halting intakes and discharges because of county and court closures.

## Client Impact

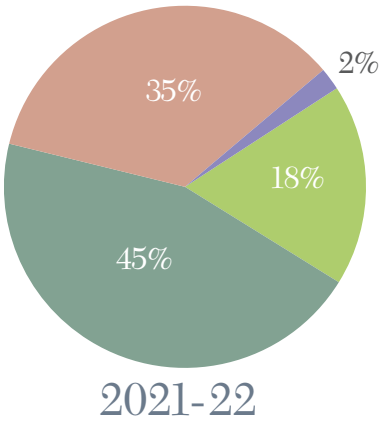
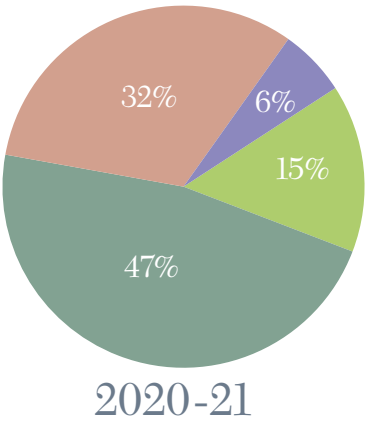


### Race/Ethnicity

- Hispanic or Latino(a) or Latinx
- Black or African American
- White
- Asian/Pacific Islander
- Other
- Unknown/Not Reported

### Age/Years

- 0 to 5
- 6 to 12
- 13 to 17
- 18 & Older







## Celebrating Safety

### Addressing safety for kids and staff

Elizabeth Gonzalez has seen many changes in her 21 years of service to Five Acres. As the chief program officer for intervention services, Elizabeth's experience in overseeing many divisions has contributed to her vast knowledge and understanding of child welfare and behavioral health care. But nothing compares to the labored changes that have happened since 2016 and most recently in this past fiscal year.

While we were founded to care for children who had no home, the primary philosophy has always been for Five Acres to address and help heal the trauma that affects children and their families, so they can grow and thrive within a loving family. Elizabeth said that the direction is toward having a broader reach within the community to support vulnerable families through challenging times. "We are expanding services in private healthcare through one of the largest healthcare providers in California and many other branches,"

said Elizabeth, who is a licensed marriage and family therapist. "In addition, the county, state and federal are supporting prevention services rather than congregate care" where children and youth live in residential facilities.

Five Acres staff found themselves in a whirlwind of changes. First, they adapted their Residential Program to offer Short-Term Residential Therapeutic Program, reducing the length of stay and providing mental health services. This program permitted "all kids to come through the same door, regardless of risky behavior compared to lower-level need," which must be considered to have a safe campus, Elizabeth explained. We made the necessary adjustments to shore up facilities improvements, install keyless entries and camera systems, increase staff training, and ensure they had the tools they needed to work with the kids. The youth's behaviors started to stabilize.

*continues*

Then, we expanded Transitional Shelter Care (TSC), a short-term stay for children who have left a placement and unable to be in another placement yet. The length of stay is anywhere from 72 hours to 10 days. "TSC is not meant to be a treatment program; it's a place to feel safe, a soft place to land and provide the basic crisis level services like suicide assessment, risk assessment, and stabilization of the situation to maintain safety," said Elizabeth.

When the team felt they found their groove with all these changes, Family First Prevention Services Act came around and they regrouped to avoid being designated as an Institution of Mental Diseases. With all previous adaptations and expansions, we were a step ahead of the game. We could not have more than 16 beds at any one site and needed to have full teams for each site, so we found ingenious ways to utilize the spaces we had

within our reach. The team worked behind the scenes, demonstrating creativity, collaboration, and teamwork. We were the first organization to secure the State approval.

Having seen it all in her more than 20 years of experience coupled with her understanding of child welfare's history, Elizabeth reflected, "We quickly moved from 'this is where kids should grow up' to 'stabilize them to get them to their forever homes.' Our main goal is permanency, and whether we are providing services for family reunification or adoption, we want our kids on a path to their forever homes."

Every child deserves to grow up in a loving, home. "That's what keeps us showing up every day," said Elizabeth. "Whichever door they come in, we want them to exit through permanency."

## Safety

One of Five Acres core missions is to maintain the safety of our clients. Unfortunately, many of our children arrive struggling with a myriad of safety concerns. In FY21-22, some of the top safety concerns that children experienced who entered our residential divisions were suicidal ideation, dangerousness to others and self-harm. Our staff work hard with our children to support them in overcoming these challenges.







## *Celebrating Well-being*

### Finding the right home to thrive and grow

Jonah\* was an energetic five-year-old little boy who was referred to Wraparound services when the Department of Children and Family Services (DCFS) removed him from his mother's care due to domestic violence in the home. Jonah and his twin brothers were placed in the care of an aunt, who had her own children with special needs.

"Jonah couldn't understand why he couldn't go home to his mom, and that resulted in really big emotions," said Wendy Gutierrez, division director of Community Based Specialty Services. "Jonah's aunt wanted to help her sister until she was able to get her kids back but was very overwhelmed with many kids who needed all of her attention, especially Jonah. He didn't have words to describe how frustrated and confused he was, so instead he hit and kicked, and screamed and broke furniture."

Wendy described how the Wraparound team quickly jumped into action and started seeing Jonah at home and school where he needed the most support. Jonah's path to improving his well-being was slow and steady as was his journey to finding another home. The Five Acres

team followed Jonah from home to home, and school to school when he had some bumps in the road. We gave him a voice so his new home and new school understood what he needed to be the best Jonah.

His social worker was able to find a home with Jonah's grandma and uncle. When Jonah arrived at his new home, he was scared and confused, not quite understanding he was not visiting and instead, this would be his home moving forward. The Wraparound team had a family counseling session on his first day, and Jonah felt comfortable having people he knew come visit and help him get to know his family.

"The team helped the family identify strengths and create a safety plan for Jonah's big emotions," said Wendy. "The family quickly realized together that his home was perfect because Jonah was the youngest boy surrounded by teenagers who wanted to play football, video games, and wrestle. No one was afraid of Jonah

*continues*

kicking or punching, which made Jonah feel safe to come out of his shell.” Jonah realized he had a large family he had never met, who loved him and wanted him to stay until the social worker said it was safe to go home to his mom.

At school, the Wraparound team suspected Jonah struggled because he had undiagnosed ADHD, so when he couldn’t pay attention in class, he punched the teacher or students around him when he was bored or frustrated. The Wraparound team helped refer Jonah to psychological testing, and suddenly a report with recommendations made it easier for Jonah to get the support he needed to be successful. From being expelled from his first school for hitting students and teachers, to changing schools numerous times, it took some time for Jonah to start feeling like he fit in at school. The Wraparound team was present during every parent-teacher meeting to encourage positive interventions like giving Jonah responsibilities in the classroom and giving Jonah lots of praise for cooperating in class. The Wraparound team introduced a yoga ball instead of a chair at his desk, helping Jonah bounce in class which kept him seated at his desk instead of walking around the classroom. Jonah felt so proud when he

started doing well in school, thriving and growing in his new settings.

When Jonah felt safe at home and school, he started talking about his big emotions instead of hitting and kicking. Jonah’s mom was also able to visit with him, focus on doing what DCFS needed from her so Jonah could come home. Jonah was able to have family counseling sessions and keep his connection with his mom until the court decided it was safe enough to go home. “The Wraparound team helped Jonah understand and make sense of his little world until he was safe to go home and followed him every step of the way,” said Wendy.

“Sometimes our children don’t have a linear path when DCFS gets involved. They change homes and schools frequently. Having a consistent team of mental health professionals who walk alongside that child and their family, means a world of difference for the end of their story,” said Wendy. “We were able to help Jonah have stability and feel safe until it was safe enough to go home to mommy.”

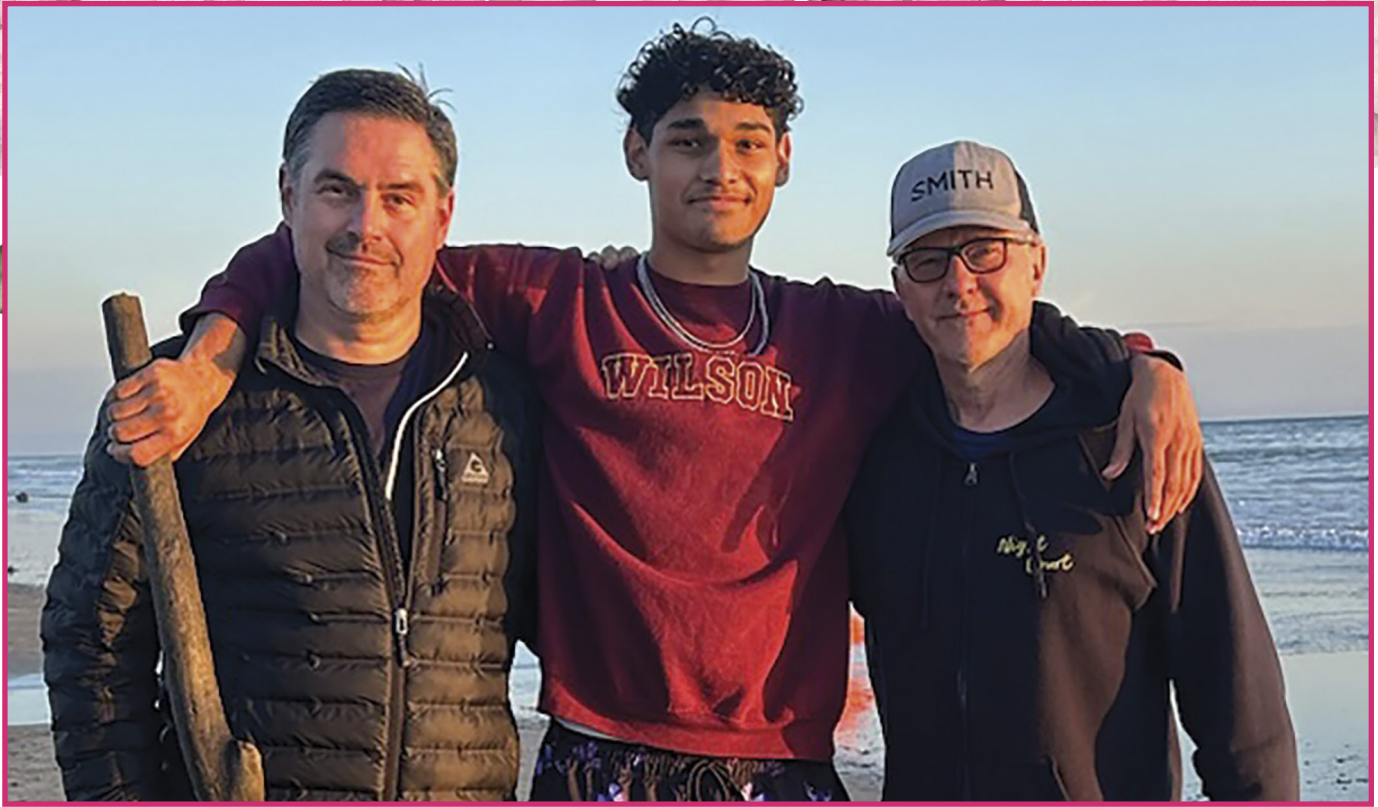
\* Name has been changed to protect the child’s identity and confidentiality.

## Well-being

We know that choice is important, and having access to care improves outcomes. As a result, we continue to offer both in-person and telehealth services throughout six counties. In FY21-22, 76% of our clients chose telehealth services to incorporate into their care with us.







## Celebrating Permanency

### Making meaningful and permanent connections

While Thomas Schultheis, a teaching artist, would talk about having children in the 24 years they have been together, Michael Warga was unsure about the idea since he did not see himself as a father. On his commute to work on the set of a television show as an assistant prop master, Mike heard a radio ad for Raise a Child, an agency that was recruiting foster parents and works with organizations like Five Acres to match foster children with loving parents. Thomas was unable to attend the event, so Mike agreed to go on their behalf and heard a foster father and his adoptive son speak at the event.

Thomas didn't think he was going to have a great time, but then "he comes back and has a life-changing moment." It took them years to find a path that made sense to them, but once they started figuring out the steps to becoming foster parents, they trained with Five Acres in 2014. In the first training session, they went around the room asking everyone what was the age range of the children they wanted in their homes, Thomas and Mike responded with "We have no idea,"

which allowed them to be open to different age ranges of foster kids.

"We ended up having this saying, rather than put our sights on a theoretical child, let's be open to when we meet an actual human being that speaks to us and has a natural connection. That thought has guided us well," said Thomas.

By 2015 they became certified and opened their home to four teenage boys at different times. They would get numerous calls from our staff asking if they were interested in having a foster child placed. When they finally said yes it was a Saturday after 10 p.m. and we needed to place a teenage boy on Sunday because he was going to start school that following Monday. He was a few months shy of turning 18 when they were complete strangers to each other. "That was five years ago this past January, and we are still connected with him to this day. He stayed for two years with us. We had some big

*continues*

victories with him and some big challenges with him,” said Mike. From then on, they were connected to Kidsave, an organization that helps older foster care youth make meaningful and lasting connections with adults. They began attending events where youth would have a voice and choice in choosing who they would like to get to know more.

“Kids have a final say every step of the way. It ends up reverberating in our parenting that we continue to check with them about most things to get their opinions and perspectives,” said Thomas, who said Five Acres staff kept mentioning Kidsave, which was a game changer.

Mike added that “giving the kids the say and the power has been remarkable in our journey.” Between Five Acres, Raise a Child, and Kidsave, it really does take a village. “They have been helpful and supportive of us in a variety of ways.”

Our team provided the family with support, teaching and guiding Thomas and Mike in areas they were not well versed. In the extremes, our team has been there to celebrate accomplishments and successes, including challenging times when we stepped up to encourage and assist them as a family. In the intensive services for some of the boys, our team has given the family three workers

that work with them weekly, and this has been beneficial in a variety of ways.

The couple continues to have meaningful connections with the boys who have since left. One of them has only four tickets to his graduation, and he has invited Thomas and Mike along with his foster mom and biological mother. Another boy who was failing school, now has a 4.6 grade point average, and was recently accepted as an early admission candidate to two colleges.

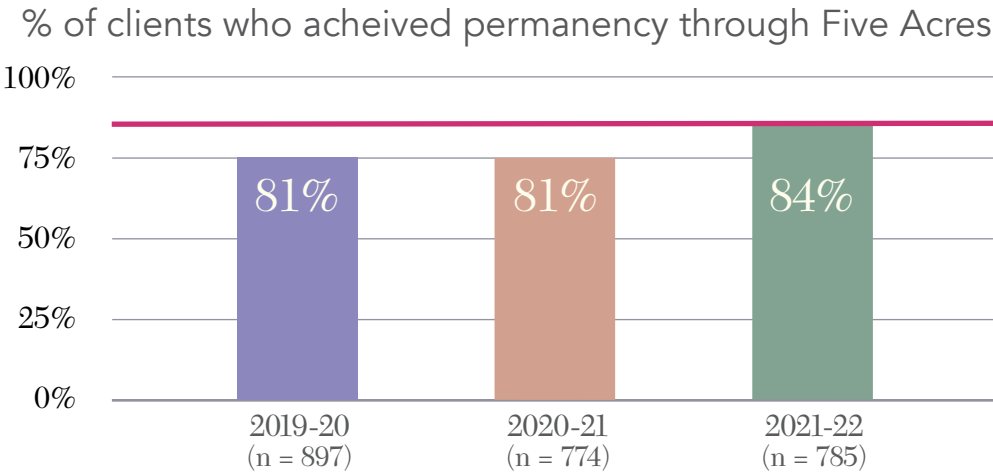
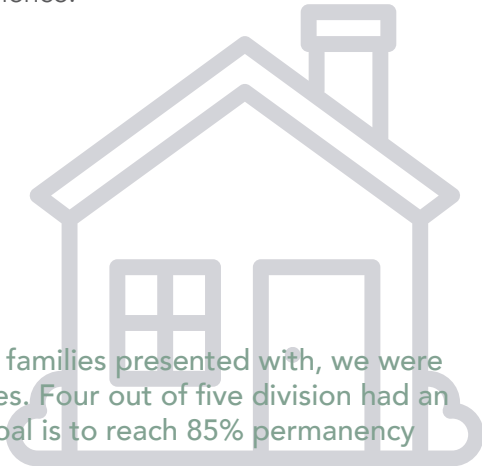
“I never thought I would be a father. Tom would talk about it repeatedly, and I didn’t see that in myself,” said Mike. “The connection with the boys in foster care has definitely changed our lives for the better. We have done a lot in our lives, but not anything that compares to the complexity and the significance of what this means to us in our hearts as we work with these kids.”

Thomas added, “we are learning that consistent love and support, showing up and following up can really make a positive impact on these kids.”

They are now seeking to become adoptive parents to one of the teenagers, who is thriving and flourishing. He chose them and the reward has been nothing but wonderful to experience.

# Permanency

Despite the pandemic and the added stressors that our families presented with, we were able to maintain an 84% permanency rate for our families. Four out of five division had an improvement in permanency from the prior year. Our goal is to reach 85% permanency rate by 2025!



2025  
Agency  
Target:  
**85%**





# Leadership and Service Area

## 2021-2022 Executive Board

Susan P. McGuirl,  
*Board Chair*

Christianne F. Kerns,  
*Past Board Chair and  
Vice Chair Audit*

Shoshana Puccia  
*Board Secretary*

Grace Russak  
*Vice Chair Finance/Investment*

Chris Selak,  
*Vice Chair Advancement*

Rustin Mork  
*Vice Chair Nominating*

Don Boline  
*Vice Chair Administration*

## 2021-2022 Board of Directors

|                    |                 |
|--------------------|-----------------|
| Chantal Bennett    | Jason Melillo   |
| Mimi Carter        | Lance Polverini |
| Andrew Crowell     | John Reitnouer  |
| Dennis Duran       | Nicole Rodger   |
| Ndubisi Ezeolu     | Erica Tejeda    |
| Kirsten Hansen     |                 |
| Celeste Liversidge |                 |

## 2021 Golf Classic

Danny Reaume and Joey Reaume  
*Co-Chairs*

## 2022 Annual Gala

Trish Gonzales and Nicole Rasic  
*Co-Chairs*

## Children's Guild

Ruth Coyne and Florence Nelson  
*Co-Presidents*

## Senior Leadership

Chanel Boutakidis, MA, MFT  
*Chief Executive Officer*

Jennifer Berger, MPA  
*Chief Advancement Officer*

Chinling Chen, LCSW  
*Chief Program Officer, Prevention*

Elizabeth Gonzalez, MA, LMFT  
*Chief Program Officer, CCR*

David L. Graft  
*Chief Financial Officer*

Rachel McClements, PsyD  
*Chief Operating Officer*

## Offices

### 1. Colby and Keck Buildings

704 W. Mountain View St.  
Altadena, CA 91001  
Ph: (626) 798-6793  
Fax: (626) 797-7722

### 2. S. Robert and Denise Zeilstra Research & Training Center

747 W. Mountain View St.  
Altadena, CA 91001  
Ph: (626) 798-6793  
Fax: (626) 797-7722

### 3. Robert Ketch Administration Building

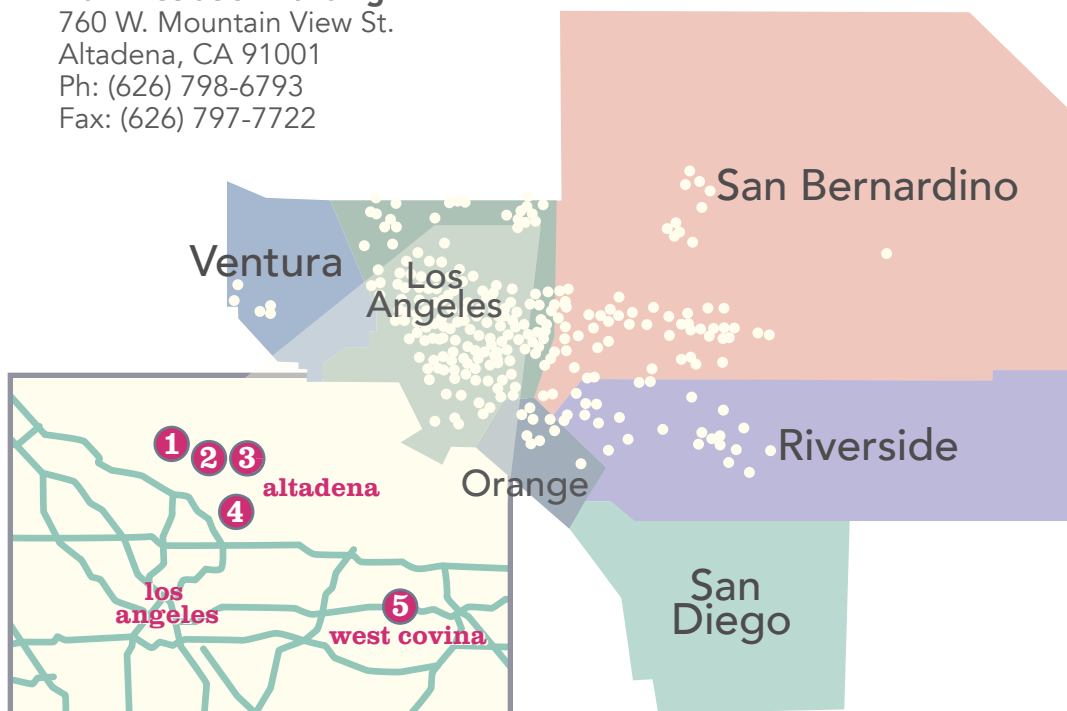
760 W. Mountain View St.  
Altadena, CA 91001  
Ph: (626) 798-6793  
Fax: (626) 797-7722

### 4. Fair Oaks Location

867 N. Fair Oaks Ave.  
Pasadena, CA 91103  
Ph: (626) 993-3100  
Fax: (626) 585-1664

### 5. West Covina Location

2934 E. Garvey Ave., South  
Suites 100A, 102 and 242  
West Covina, CA 91791  
Ph: (626) 214-0301  
Fax: (626) 214-0303



# Financials

## Audited financial statement 2021-2022

### Assets

|                      | 2021               | 2022               |
|----------------------|--------------------|--------------------|
| Cash                 | \$14,139,820       | \$4,755,468        |
| Investments          | \$19,120,294       | \$21,974,786       |
| Accounts Receivable  | \$2,644,141        | \$7,572,380        |
| Collection           | \$195,000          | \$0                |
| Pledges Receivable   | \$38,472           | \$0                |
| Other Current Assets | \$1,392,646        | \$1,512,053        |
| Fixed Assets (net)   | <u>\$4,087,653</u> | <u>\$2,419,231</u> |
| Total Assets         | \$41,618,026       | \$38,233,918       |

### Liabilities

|                             |                    |             |
|-----------------------------|--------------------|-------------|
| Accounts Payable            | \$907,137          | \$4,309,733 |
| Accrued Liabilities         | \$6,684,596        | \$5,247,817 |
| Deferred Revenue            | \$187,071          | \$217,754   |
| Government Owned Assets     | \$64,038           | \$0         |
| Line of Credit              | \$0                | \$0         |
| Paycheck Protection Program | <u>\$5,394,077</u> | <u>\$0</u>  |
| Total Liabilities           | \$13,236,919       | \$9,775,304 |

### Fund Balances

|                                   |                    |                    |
|-----------------------------------|--------------------|--------------------|
| Retained Earnings (unrestricted)  | \$26,560,747       | \$26,547,124       |
| Retained Earnings (restricted)    | <u>\$1,820,360</u> | <u>\$1,911,490</u> |
| Total Net Assets                  | \$28,381,107       | \$28,458,614       |
| Total Liabilities & Fund Balances | \$41,618,026       | \$38,233,918       |

### Program Revenues

|                                     |                    |                    |
|-------------------------------------|--------------------|--------------------|
| Government Contracts & Service Fees | \$34,003,094       | \$31,495,784       |
| Other Programs                      | <u>\$2,734,792</u> | <u>\$3,302,275</u> |
| Total Program Revenues              | \$36,737,886       | \$34,798,059       |

### Public Support

|                          |             |                  |
|--------------------------|-------------|------------------|
| Contributions & Bequests | \$1,402,135 | \$1,474,017      |
| In-Kind                  | \$632,767   | \$432,858        |
| Collections              |             |                  |
| Special Events           | <u>\$0</u>  | <u>\$596,765</u> |
| Total Public Support     | \$2,034,902 | \$2,503,640      |

### Other Revenues

|                                    |                    |                    |
|------------------------------------|--------------------|--------------------|
| Dividends: Gain/Loss on Investment | <u>\$3,627,167</u> | <u>\$1,072,952</u> |
|------------------------------------|--------------------|--------------------|

### Total Revenue & Support

|  |                     |                     |
|--|---------------------|---------------------|
|  | <b>\$42,399,955</b> | <b>\$38,374,651</b> |
|--|---------------------|---------------------|

### Expenses

|                  |                    |                    |
|------------------|--------------------|--------------------|
| Program Services | \$32,163,223       | \$30,556,252       |
| Support Services | <u>\$6,068,647</u> | <u>\$6,055,139</u> |
| Total Expenses   | \$38,231,870       | \$36,611,391       |

### Change In Net Assets

|  |                           |                           |
|--|---------------------------|---------------------------|
|  | <u><b>\$4,168,085</b></u> | <u><b>\$1,763,260</b></u> |
|--|---------------------------|---------------------------|

Most of Five Acres' funding comes from highly restricted government contracts which don't always cover everything our clients need. Your charitable support is the game changer, empowering special programs and projects that enhance the safety, well-being and permanency for the children and families in our care.







# Celebrating Our Volunteers

## Volunteering to make this world a better place

In 1888, a few volunteers founded Five Acres, then known as The Boys and Girls Aid Society of Los Angeles, an organization committed to bringing safety to boys and girls who suddenly were alone, neglected or abused. During our 135 years, one constant remains the same at Five Acres – the commitment of our volunteers to support the mission and ensure each child has a permanent, loving home. Ruth Coyne, co-president of the Five Acres Children's Guild with Florence Nelson, is one volunteer among the legacy of supporters who has contributed her time to show foster care children they are cared for and thought of daily.

Influenced by her mom who, despite having seven children of her own, Ruth saw how she still invited kids who were in need from the inner city to come stay at their home in Connecticut. Five years ago, Ruth was at a time in her life when the children were in high school

and college and had more flexibility at work that she was able to find time to give to an organization whose mission was to help children in need. In addition, Ruth continued to see the nation's income gap increase and realized that there are so many more families struggling who could use the support of the community.

"It is painful to know there are families and kids without shelter, enough food, or loved ones to care for them. I believe we do not choose our entry into this world, and some are lucky enough to be well provided for and others are not, through no fault of their own, so those that have, need to help those that have not," said Ruth. "If we can assist kids in need when they are young, providing care, love and opportunities for them to succeed in life, then we are helping make this world a better place for all, not just the fortunate few."

*continues*



Today, Ruth with The Guild members provides hands-on activities with the kids, working together, encouraging them to grow, and providing fun times, which they all love. The Guild plans and facilitates monthly activities like barbecues and bounce houses, movie nights, game nights, magicians, dance lessons, park visits, Descanso Gardens light show, bowling and pizza, mini-golf, and dinners out. Educational and charitable activities include their summer book club, vision boards, gardening sessions and making sandwiches for Union Station. The members also host special celebration activities for the holidays like Christmas shopping, Halloween fun and games, Valentine treats and kind notes, Easter egg hunts, and more. They also deliver birthday cakes, cards and gifts on the children's special day with a note from their birthday angel.

"Watching, working, and talking with the kids at our events is what brings us all back," said Ruth. "They are bright, positive, full of energy and want what everyone one wants – to feel capable, to feel welcome, and to feel wanted, needed and loved."

One memorable and affirming occasion was seeing the kids get excited about packing lunches for Union Station. "The kids were very concerned that we were providing healthy food and were worried about allergies – they were asking all sorts of questions to make sure we were taking care proper care of those less fortunate them themselves. [They asked] 'What if they don't eat meat? What if they can't chew that well?' I could tell it made them feel good to be helping others."

Helping others was a sense of pride and accomplishment for the children living in our residential program. Likewise, Ruth's contribution as a volunteer working to help and care for others has been rewarding, too.



"If we have been given a life of opportunity, if we have achieved a life of comfort and the ability to provide for ourselves, while others have not been so fortunate... shouldn't we share and reach out to those in need?" questioned Ruth. "Especially to kids, who by no fault of their own may be part of a family that is unable to care for them. As a society, we need to care for those who cannot care for themselves."

Ruth walks the talk and follows in the footsteps of other inspiring volunteer figures in our history.

"Volunteering is a way to fulfill our purpose on earth – whatever your spiritual beliefs are – and I believe we all can assist others in some way to make life better," said Ruth. "The example of these kids, with their own significant needs, seeing that they too can help the homeless is a perfect example that we can all volunteer our support in some way."



## Interested in Volunteering?

Ruth Coyne, co-president of The Children's Guild said, "Volunteering at Five Acres is rewarding, inspiring, sometimes heart wrenching, but so important as these kids especially, need to know people care about them."

The Five Acres Children's Guild meets once a month, and schedules activities with the kids 9 to 10 months out of the year. You can invest a little time or a lot of time – it's up to you. "But I guarantee, you will come back from all of these events feeling great!"

To learn more about volunteer opportunities, email Angelique Blancas at [ablancas@5acres.org](mailto:ablancas@5acres.org) or call (626) 487-3748.





# Thank You!

We are profoundly thankful to Five Acres' generous and selfless donors who bring hope home for every child to have a loving, permanent family. Because of you, the futures for these children and families are brighter than ever.

## Philanthropy Circle and Cumulative Giving 2021-2022

### Philanthropy Circle

#### **Visionary Circle** (\$100,000.00 +)

Anonymous  
Sierra Health Foundation  
UniHealth Foundation  
Helen and Will Webster  
Foundation

#### **Humanitarian Circle** (\$50,000.00 - \$99,999.99)

Kathryne Beynon Foundation  
Gesner-Johnson Foundation  
Johnny Was  
The Patron Saints Foundation

#### **Benefactors Circle** (\$25,000.00 - \$49,999.99)

Anonymous  
Youssef and Kamel Mawardi Fund  
The Kenneth T. and  
Eileen L. Norris Foundation  
Pasadena Community  
Foundation  
Tryad Properties Inc

#### **Champions Circle** (\$10,000.00 - \$24,999.99)

Anonymous (4)  
Arthur J. Gallagher & Co  
Rita and Armen Baranian  
Beatrice and Paul Bennett  
Jason and Laura Berns  
CopperPoint Insurance  
Andrew E. Crowell and Family

First Congregational Church  
Tsutayo Ichioka & Satsuki\  
Nakao Charitable Fdn –  
Dr. Doug and Jane Krech  
In-N-Out Burger Foundation  
Insurance Industry Charitable  
Foundation  
Sam and Amber Jaeger  
Celeste and Samuel Liversidge  
Richard A. McDonald, Esq.  
Susan P. McGuirl and  
Bob Musselman  
Jason and Billie Melillo  
Mariann and Thomas Nolan  
Brad and Lorraine Reaume  
Rite Aid Foundation  
Jeff and Melanie Savarese  
Schwab Charitable Fund  
Nicole and Ryan Sinutko  
The Waterwheel Foundation  
(Phish)  
Robert and Christina Trauber  
U.S. Bank Foundation  
Beth Uffner and Robert Goldfarb  
Venable Foundation, Inc.  
Wells Fargo  
Whittier Trust Company

#### **Advocates Circle** (\$5,000.00 - \$9,999.99)

Airbnb, Inc.  
Sharon Faye Alferi  
Anonymous  
James A. Avedikian

Chantal and Stephen Bennett  
Brian and Carolyn Botsford  
David and Gail Bryant  
Mimi and Paul Carter  
Cathay Bank Foundation  
County of Los Angeles -  
Supervisor Kathryn Barger  
Anthony Dedeaux  
Deka Law Group  
Dennis Duran and Lori Sandoval  
East West Bank  
Gail and James Ellis  
Fidelity Charitable Gift Fund  
Whit and Jacqueline Gilfillan  
Michael and Liz Giordano -  
Jean B. Fields Charitable Fund  
Goodwin Family Memorial Trust  
Casey and Amanda Gordon  
Hahn & Hahn LLP  
Beth Fishbein Hansen  
Tim Jacobsen  
Lee & Associates - Pasadena,  
John Berger  
Majestic Realty Co.  
Joe Mallinger  
Matthew McIntyre and  
Garrett Collins  
Dr. Annette Ermshar and  
Dan Monahan  
Robert London Moore, Jr.  
Morgan Stanley  
Rustin and Paola Mork  
Nicolas Mosaquites III  
Linda and Dr. Carl K. Moy

Lance and Amy Polverini  
David and Laura Quigg  
Kimberly Ramirez  
Nicole Rasic and John Palacio  
Andrew Rea  
John and Susan Reitnouer  
George and Georgia Reyes  
Evan Richardson  
Nicole and Robert Rodger  
Dr. Kenneth and Maggie Sabbag  
Craig and Cheryl Stewart  
Marcus and Eisanne Tanimoto  
Tucker Ellis LLP  
MUFG Union Bank  
Union Bank Foundation  
United Way of Greater  
Los Angeles  
US Bank National Association  
James and Maggie Van De Voorde  
Winston & Strawn LLP

#### **Ambassadors Circle** (\$2,500.00 - \$4,999.99)

Meghan and Monte Baier  
Bradley Bush  
Kate Candelora  
Riley and Jill Cole  
Ryan D. Dietz  
Excelsior Partners, LLC  
Facebook  
Federal Home Loan Bank of  
San Francisco  
Gamble Jones Investment  
Counsel

Marie Gauthier  
 Trish Gonzales  
 Laura Gordon  
 Harrington Group, LLP  
 Mark Harris  
 Invitation Homes  
 Patricia A. Johnson  
 Christianne and Charles Kerns  
 Nicole Klyczek  
 Virginia M. Konzelman  
 Danny Kronfli  
 Kruger Brand  
 Alan and Susan Kulawik  
 Greg and Lauren Lercel  
 Lionsgate  
 Tom Lyon  
 Patricia Mcnall  
 Morgan Adams, Inc.  
 Ronald Newburg Foundation Inc.  
 Kathleen and Daniel Nikolai  
 Matt Nix and Melinda Stahl  
 Guillermo Olaiz  
 Kris Ordaz and Mike Gagnon  
 Elizabeth Orndorff  
 Tom Polenzani  
 Prudential Financial  
 Bonnie Rasic  
 Raymond James Charitable  
 Endowment Fund  
 Daniel and Erika Reaume  
 Joseph and Breanna Reaume  
 Julie Rosenthal  
 Daniel and Sarah Rothenberg  
 Grace and Kenneth Russak  
 David Scheper  
 Christine V. Selak  
 SW7 Charitable Group -  
 By Arcadia Management  
 Three Sisters Catering  
 Twohey's Restaurant  
 United Charity Foundation  
 Carol and Robert Williams  
 Jamen and Tessena Wurm  
 Dr. Lee Zuckerman M.D.

**Associates Circle**  
 (\$1,000.00 - \$2,499.99)

Carolyn G. Adams  
 Angeles National Wealth  
 Advisors  
 Anonymous (2)  
 Vincent Anzalone  
 Reese and Nancy Aplin  
 Avon Studio Transportation  
 Bank of America Charitable  
 Foundation  
 Patricia Barajas Tavera  
 Marisol Barrios Perez and  
 Francisco Perez  
 Jay and Meta Berger

Nicholas Borrelli  
 The Botsford Group - Compass  
 Chanel and Ioakim Boutakidis  
 Eric and Leely Brumm  
 Kristen and Anthony Cannizzo  
 Paul and Amy Catherwood  
 Colliers International  
 Community Foundation For  
 Monterey Co  
 Faith and John Conklin  
 Tonetta Conner  
 The Revocable Trust of  
 Stuart P. Coxhead, Jr.  
 Cybergrants  
 Carlos Davis  
 Leo and Stephanie Dencik  
 Michele and Barton Doll  
 Genevieve and Jacob Fakoory  
 Patrick Fiedler  
 Mark and Terri Forbes  
 Kathleen R. Baumann and  
 Michael R. Girvigian, MD  
 Scott and Norma Grannis  
 Charles Hackerman  
 Donald Hall  
 Tom and Page Haralambos  
 Berkeley and Kristin Harrison  
 Michael and Ellen Hatch  
 William and Lindsay Hayden  
 Ashley and Matthew Housman  
 Jaydee and Darren Hughes  
 Huntington Culinary, Inc.  
 IMEG Corp  
 Innabi Law Group APC  
 Intact Insurance  
 Jones Lang LaSalle  
 John & Ursula Kanel  
 Charitable Foundation  
 Pam and Steve Kessler  
 Tera King  
 Robert Kral  
 Debi and Scott Kroman  
 Sara and Erik Larson  
 Kelley Bannon Lashley and  
 Daniel C. Lashley  
 Jillian Lauren Shriner and  
 Scott G. Shriner  
 Roberta Lewis  
 Longo Toyota - Scion - Lexus  
 William C. MacMillen III  
 Magna Carta Foundation Inc.  
 Majestic Realty Foundation  
 Max Studios Inc.  
 Steve Mena  
 Mission Driven PR  
 Stephanie Moffat  
 Travis Olsen  
 Pango Group  
 John and Verna Parrish  
 PayPal Giving Fund

Anne B. Peterson  
 Josh Pyatt  
 Sunder and Mandy Ramani  
 Bryson Reaume  
 Randall and Candy Renick  
 Rey-Crest Roofing &  
 Waterproofing Co.  
 Sindee and Steve Riboli  
 Richard /Dunn Family Foundation  
 Chad and Emily Richardson  
 Rose Bowl Legacy Foundation  
 Linda and George Sakellariou  
 Silverado Reality Advisors INC  
 John and Laura Sinnema  
 Smarter Every Day LLC  
 Sean and Karin Stellar  
 Ann H. Stewart  
 Keith Tanabe  
 Pasadena Tournament of Roses  
 Ken and Kathleen Turknette  
 Unique Image - Wafa Kahn  
 Vroman's Bookstore  
 Zoe Walrond and Myron Levin  
 Louise Wardlaw  
 Dr. William Wishner  
 Cathleen and Timothy  
 Woodington  
 Jason Xu  
 Julie Yorba  
 Judy Young

**Friends Circle**  
 (\$500.00 - \$999.99)

Amgen  
 Elizabeth Anderson  
 Angelus Block Company, Inc.  
 Bruce H. Babcock and  
 Barbara L. Vang  
 The Benevity Community  
 Impact Fund  
 Julia Blunden  
 Leonardo Bolanos  
 Marla E. Borowski  
 Kevin Botsford  
 Lawrence Braun  
 Bucky Burge  
 Ryan Candelora  
 Louis and Mary Caron  
 Edna Castro  
 Elise and Edward Chen  
 Peter Chen  
 Valery Goldes & Co  
 Computershare  
 Travis Crain  
 Kimberly Crowley  
 Jeff Danna  
 Christine and Jay Davis  
 Janet and Edgar Davis  
 Jill and Brian Dennis  
 Jean-Jacques and Susan Dupre

Elehawk Industries, Inc  
 Fidelity Brokerage Services LLC  
 Fidelity Charitable  
 John and Cassandra Filippone  
 Robert J. Floe  
 Veronica L. Francis  
 Charles and Stephanie Ginn  
 Traute and Willard Gleeson  
 Theresa Gonzales  
 Rose and Mike Gonzalez  
 Dodie Gregg  
 Tim Hartley and Jason Lyon  
 Mitchell and Kimberly Heeger  
 Martha A. House and  
 Mark Simons  
 Kin Hui Charity Foundation  
 Karen Humphrey  
 Karen and Abhinandan Jain  
 Alice and Christopher Juarez  
 Catherine A. Keig and  
 James S. Hayes  
 David J. Klotzle  
 Mark and Hanna Lim  
 Ben and Lucia Logan  
 Tania Makshanoff  
 JP McCord  
 Ricardo and Pamela Navarro  
 Kathryn Perini  
 Shoshana Puccia  
 Jenner Rasic  
 Tracy and Stuart Rekart  
 Michael and Linsey Reyes  
 Peter Robinson and Buffy Shutt  
 James Roser  
 Hripsime and Hrach Shahbazian  
 William P. Skipper and  
 Jennifer L. Hammond  
 Peter Smith  
 Michael and Marianne Strawn  
 Scott and Emily Street  
 Erica E. Tejada  
 Zeenat Thiara  
 Vigen Valijan  
 Paul Watson and Stacie Mayoras  
 Jane Wilkens  
 Katherine and Warren Wimmer





# Cumulative Giving

## Diamond Benefactor

(\$1,000,000.00 +)

The Ahmanson Foundation  
W.M. Keck Foundation  
Ralph M. Parsons Foundation  
Margie and Robert E. Petersen Foundation  
The Rose Hills Foundation  
United Way of Greater Los Angeles  
Helen and Will Webster Foundation  
Weingart Foundation

## Platinum Benefactor

(\$500,000.00 - \$999,999.99)

Burton G. Bettingen Corporation  
Kathryne Beynon Foundation  
Crosby & Nash  
Jean Ellison Estate  
Anne and Courtney Marculescu  
Margaret Milligan - Omar B. Milligan Enterprises  
Jenell Newhouse Estate  
Pasadena Community Foundation  
Marilyn and John Wells  
Wells Fargo

## Gold Benefactor

(\$250,000.00 - \$499,999.99)

The Annenberg Foundation  
Anonymous (2)  
Auxiliary of Five Acres  
BCM Foundation  
The Estate of Frank Brill  
Change a Life Foundation  
Andrew Crowell and Family  
Don G. Erickson Trust  
Fair Oaks Professionals, LLC  
The Green Foundation  
Rose Harrington Estate  
Hutto-Patterson Charitable Foundation  
In-N-Out Burger Foundation  
The Los Angeles Times Family Fund  
Donald and Georgette Mareina  
McCreight Foundation  
Donivee and Merrill Nash  
The Kenneth T. and Eileen L. Norris Foundation  
The Patron Saints Foundation  
Randall and Candy Renick  
SHARE, Inc.  
Sierra Health Foundation  
The Smashing Pumpkins  
Jonette Strasburg Trust  
S. Mark Taper Foundation  
Beth Uffner and Robert Goldfarb  
Anne Saunders Walls Estate  
Mabel C. Williamson Estate

## Silver Benefactor

(\$100,000.00 - \$249,999.99)

Catherine and Casey Adams  
Sharon Faye Alferi  
All Saints Church  
The Angell Foundation  
Anonymous (6)  
Avery Dennison Foundation  
Avon Foundation for Women/  
Avon Products, Inc.  
Chantal and Stephen Bennett  
Bolton & Company  
Lorraine Brakebill Estate  
James M. Brayshaw Jr.  
California Community Foundation  
Stephen and Susan Chandler  
Christine and Jay Davis  
The Carl & Roberta Deutsch Foundation  
The Eisner Foundation  
Judith and Stanley Farrar  
Five Acres Children's Guild  
Robert Floe / Floe Financial Partners, Inc.  
Arthur J. Gallagher & Co  
Gesner-Johnson Foundation  
Giannini Foundation  
Elaine R. Gilbertson Estate  
Tom and Page Haralambos  
William R. & Virginia Hayden Foundation  
Tsutayo Ichioka & Satsuki Nakao Charitable Fdn –  
Dr. Doug and Jane Krech

J. W. and Ida M. Jameson Foundation  
Johnny Was  
Robert A. Ketch and Colleen Friend  
Walter Lantz Foundation  
The Thomas and Dorothy Leavey Foundation  
Majestic Realty Co.  
Youssef and Kamel Mawardi Fund  
Mericos Foundation  
Mariann and Thomas Nolan  
Peter Norton Family Foundation  
Pasadena Child Health Foundation  
Ann Peppers Foundation  
Pfaffinger Foundation  
Ernie and Gunde Posey  
QueensCare  
Brad and Lorraine Reaume  
Rincon Foundation  
Schwab Charitable Fund  
Margaret H. Sedenquist  
Lon V. Smith Foundation  
Joanne Stanley Estate  
Estate of Alice C. Taylor  
Teradata Corporation  
The Tissue Foundation  
Tryad Properties Inc  
UniHealth Foundation  
J.B. and Emily Van Nuys Charities  
Venable Foundation, Inc.  
Denise and S. Robert Zeilstra

This annual report covers the fiscal year beginning July 1, 2021 and ending June 30, 2022. Gifts received after June 30, 2022 will be acknowledged in the next annual report. We have made every effort to ensure that the information included here is correct. If an error or omission is noted, please accept our apology and kindly contact Athena Asklipiadis at (626) 773-3770 ext. 2270.





# *Celebrating Our Legacy Society Members*

## **Celebrating a moment on the fairway**

Walking up the 8th hole fairway at Annandale Golf Club with then Five Acres incoming board chair Gary Blasiar in 2003, John Reith was asked if he would be interested in getting involved in the agency. John had recently rotated off the board of the Arthritis Foundation for Southern California and was looking to get involved somewhere. You could say it was an ace in the hole.

As a certified public accountant, he joined the Finance Committee and then after a year was asked to become a board member and remained in that role for 12 years. Nearly 20 years later, he still serves as a member of the Finance and Investment Committees.

"Being involved with Five Acres has been a rewarding experience for me," said John, whose significant accomplishment was leading the Board Affairs Committee while it conducted the search for a new executive director to replace Bob Ketch. Members included Gene Gregg, Christine Davis, and Andrew Crowell. "We bonded and had a great time. We selected Chanel, and we have become dear, dear friends."

"The mission has changed so much from the ever-changing regulations. It's a tough business to be in and I can't think of a better CEO to be responsible for

Five Acres than Chanel," he reflected. "She was a perfect choice and has grown into the job so wonderfully."

John has participated in golf tournaments, attended galas, and served the children during their Holiday Dinner, giving him various experiences with the operations of the agency. Five Acres' business standpoint has been at the forefront of John's commitment, focusing on financial sustainability and the ability to protect the mission for years to come.

He took it one step further by becoming a Legacy Society Member with his wife Charlotte. Both work at The Reith Company, specializing in forensic accounting, and together they believe in our mission.

"We were the third oldest orphanage in LA County and I love the mission of helping the agency that helps kids who need it so much," said John about why he chose to include Five Acres in their estate planning. "We made the decision that this is one of those things we wanted to support."

He still golfs with Gary, and when he's at Annandale, the 8th hole fairway has a special place in his mind as "one of those worthy moments" that left a legacy in our history.





# Legacy Society

## Five Acres Legacy Society Members

The Five Acres Legacy Society was formed as a way for like-minded humanitarians to serve future families in need. By including Five Acres in your estate planning, you ensure the safety, well-being and permanency of Southern California's children as if they were your own.

Leaving your own legacy as a child and family advocate is not a complicated process. If you have a special place in your heart for our mission, we encourage you to consider including Five Acres in your estate plans or trust. Many options are available that may enable you and your family to enjoy a tax benefit now or at the time your estate is settled.

If you have already included Five Acres in your estate plan, please reach out to us. We would like to honor you through the Legacy Society to acknowledge your inspiring generosity and compassion for others. If you are considering a planned gift, please contact Jennifer Berger at (626) 773-3749 or [jberger@5acres.org](mailto:jberger@5acres.org) to learn the many ways you can establish a meaningful legacy of your own. On behalf of the children and families we serve, thank you!

## Legacy Society

Corrine Abel Estate  
Carolyn G. Adams  
Raymond Andersen Trust  
Anonymous (2)  
James A. Avedikian  
Horace and Victoria Baker  
Family Trust  
Harold Baloyan  
Jennifer and John Berger  
Jean Blackburn  
Lorraine Boatenhamer Trust  
Chanel and Ioakim Boutakidis  
Carole and Jack Brady Trust  
Lorraine Brakebill Estate  
James M. Brayshaw Jr.  
Todd A. Brewer  
Mary Brigham Estate  
Frank Brill  
Ann Garland Brown Lifetime  
Trust  
David W. Bryant  
Dianne Bukata  
Mimi and Paul Carter  
Ruth Cashy Estate  
John Chun  
William M. Clark  
Louise N. Clark  
Cathy and Paul Clement  
Mary G. Colby Estate  
Dorothy Cook Estate  
Georgia D. Coyle  
Andrew Crowell and Family

Davis Family Trust  
Ryan D. Dietz  
Henry Dupuy Estate  
Jean Ellison Estate  
Don G. Erickson Trust  
William Eskew Estate  
Judith A. Farrar  
Robert J. Floe  
Elizabeth D. Forster Estate  
Elaine R. Gilberson Estate  
Mollie Graham Estate  
Elizabeth Greenberg  
Eleanor Hague Estate  
Noel Hanson  
Rose Harrington Estate  
Hugh and Nancy Helm  
Harcourt Hervey Esq.  
Martha B. Hogan  
Anne H. Janssen Estate  
Christianne and Charles Kerns  
Estate of Carl A. Kersey  
Virginia Kinston  
Janet Kirtlan  
Debi and Scott Kroman  
Kelley Bannon Lashley and  
Daniel C. Lashley  
Pauline W. Ledeen Estate  
Harry Long  
Fred Losch Estate  
Leslie A. Lyons  
Shawn Mackey  
Tania K. Makshanoff

Estate of Anne and  
Courtney Marculescu  
Patricia Martin  
Frances L. Mayo Estate  
Richard A. McDonald, Esq.  
Everett G. McDonough  
Katheryn McEachern Estate  
Leonard McGee  
Jeffrey McGraa  
Susan P. McGuirl and  
Bob Musselman  
Christine McKenzie  
Jessica Miller  
Margaret Milligan,  
Omar B. Milligan Enterprises  
Kay Mobus Estate  
Roger Molvar  
Chiyon Yi Moore  
Margaret Mowery Moore Trust  
Christopher Morphy  
Brian Nash  
Jane F. Neilson Trust  
Jenell Newhouse Estate  
Mariann and Thomas Nolan  
Ruth and Kenneth Olson Estate  
Dr. Chris Pahl  
Jane V. Palmer  
Lilly M. Petersen Trust  
Hazel F. Peterson Trust  
Dorothy J. Phillips Estate  
Maxine Pittroff  
Ernest Posey

Shoshana Puccia  
Marjorie Reedtz  
John and Charlotte Reith  
Susan Rhoades  
Mrs. J. Randolph Richards  
Michael\* and Anne Riffey  
Karen C. Ryan  
Elzada F. Schweitzer Estate  
Margaret H. Sedenquist  
Sarah R. Simonds  
Emily Bishop Simpson Estate  
Helen Drake Smetz Trust  
Joanne Stanley Estate  
Marty Stewart  
Jonette Strasburg Trust  
Dorothy Stromberger Estate  
Ingeborg Talbert  
Lois M. Tandy  
Estate of Alice C. Taylor  
Sarah Taylor Estate  
Giulio Varsi  
Delores A. Walker Trust  
Walli D. Wallis Trust  
Anne Saunders Walls Estate  
Estate of William P. Weinberg  
Gretchen M. Wiechman  
Susan B. Wier  
George N. Williamson Estate  
Mabel C. Williamson Estate  
Marjorie K. Wyatt  
Billie K. Youngblood  
Denise and S. Robert Zeilstra

# Ways to Give

**Online:**  
[5acres.org/donate](https://5acres.org/donate)

**By check:**  
Five Acres  
760 W. Mountain View St.  
Altadena, CA 91001

**By email:**  
[giving@5acres.org](mailto:giving@5acres.org)

**By phone:**  
Contact Jennifer Berger at  
[\(626\) 773-3749](tel:(626)773-3749)



# How to Support Five Acres

1 Donate

2 Advocate

3 Connect/  
Share

4 Volunteer

5 Foster and  
Adopt

-  Facebook - [fiveacresorg](https://www.facebook.com/fiveacresorg)
-  Instagram - [fiveacresorg](https://www.instagram.com/fiveacresorg)
-  Twitter - [fiveacresorg](https://twitter.com/fiveacresorg)
-  YouTube - [fiveacreschannel](https://www.youtube.com/fiveacreschannel)
-  LinkedIn - [www.linkedin.com/company/fiveacres](https://www.linkedin.com/company/fiveacres)

Five Acres has cared for children and families in Los Angeles County since 1888. We're always looking for mission-driven individuals who are eager to use their talents to help others and change lives.



**five acres**

*promoting safety, well-being and permanency*